

## Product datasheet for **TA308234**

### LETM1 Rabbit Polyclonal Antibody

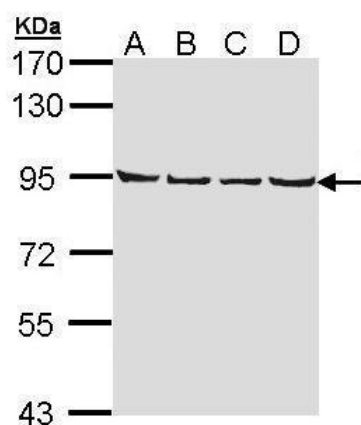
#### Product data:

Product Type:	Primary Antibodies
Applications:	IF, IHC, WB
Recommended Dilution:	ICC/IF:1:100-1:1000; IHC:1:100-1:1000; WB:1:500-1:3000
Reactivity:	Human, Mouse (Predicted: Rat, Cow)
Host:	Rabbit
Isotype:	IgG
Clonality:	Polyclonal
Immunogen:	Recombinant fragment contain a sequence corresponding to a region within amino acids 506 and 723 of LETM1 (Uniprot ID#O95202)
Formulation:	0.1M Tris, 0.1M Glycine, 10% Glycerol (pH7). 0.01% Thimerosal was added as a preservative.
Concentration:	lot specific
Purification:	Purified by antigen-affinity chromatography.
Conjugation:	Unconjugated
Storage:	Store at -20°C as received.
Stability:	Stable for 12 months from date of receipt.
Predicted Protein Size:	83 kDa
Gene Name:	leucine zipper and EF-hand containing transmembrane protein 1
Database Link:	<a href="#">NP_036450</a> <a href="#">Entrez Gene 56384 Mouse</a> <a href="#">Entrez Gene 305457 Rat</a> <a href="#">Entrez Gene 3954 Human</a> <a href="#">O95202</a>
Synonyms:	leucine zipper-EF-hand containing transmembrane protein 1
Note:	Seq homology of immunogen across species: Rat (83%), Cow (84%)
Protein Families:	Transmembrane

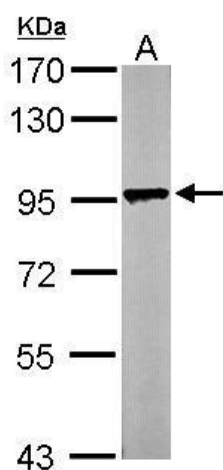


[View online »](#)

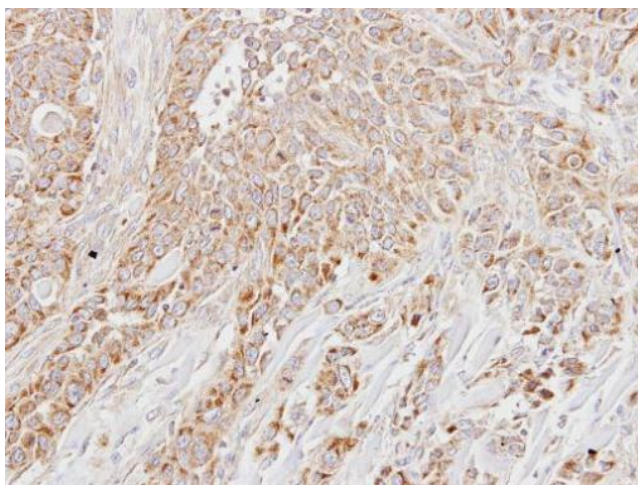
Product images:



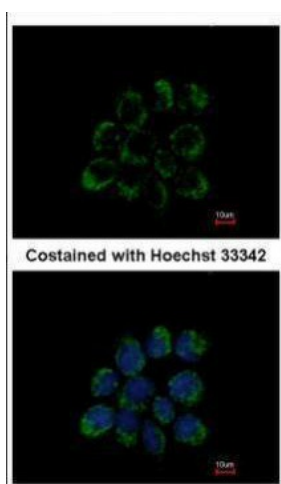
Sample (30 ug of whole cell lysate). A: A431. B: H1299. C: HeLa. D: Hep G2. 7.5% SDS PAGE. TA308234 diluted at 1:1000.



Sample (50 ug of whole cell lysate). A: Mouse brain. 7.5% SDS PAGE. TA308234 diluted at 1:1000.



Immunohistochemical analysis of paraffin-embedded HSC3 xenograft, using LETM1 (TA308234) antibody at 1:500 dilution.



Immunofluorescence analysis of methanol-fixed A431, using LETM1 (TA308234) antibody at 1:200 dilution.