

Product datasheet for **TA308231**

MPP3 Rabbit Polyclonal Antibody

Product data:

Product Type:	Primary Antibodies
Applications:	IHC, WB
Recommended Dilution:	IHC:1:100-1:1000; WB:1:500-1:3000
Reactivity:	Human
Host:	Rabbit
Isotype:	IgG
Clonality:	Polyclonal
Immunogen:	Recombinant fragment corresponding to a region within amino acids 270 and 585 of MPP3 (Uniprot ID#Q13368)
Formulation:	0.1M Tris, 0.1M Glycine, 10% Glycerol (pH7). 0.01% Thimerosal was added as a preservative.
Concentration:	lot specific
Purification:	Purified by antigen-affinity chromatography.
Conjugation:	Unconjugated
Storage:	Store at -20°C as received.
Stability:	Stable for 12 months from date of receipt.
Predicted Protein Size:	66 kDa
Gene Name:	membrane palmitoylated protein 3
Database Link:	NP_001923 Entrez Gene 4356 Human Q13368

Background: This gene product is a member of a family of membrane-associated proteins termed MAGUKs (membrane-associated guanylate kinase homologs). MAGUKs interact with the cytoskeleton and regulate cell proliferation, signaling pathways, and intracellular junctions. This protein contains a conserved sequence, called the SH3 (src homology 3) motif, found in several other proteins that associate with the cytoskeleton and are suspected to play important roles in signal transduction. Alternatively spliced transcript variants have been identified. One transcript variant is experimentally supported, but it doesn't encode a protein. [provided by RefSeq]

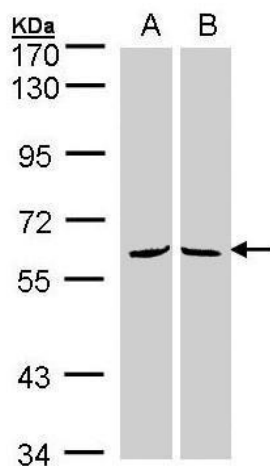


[View online »](#)

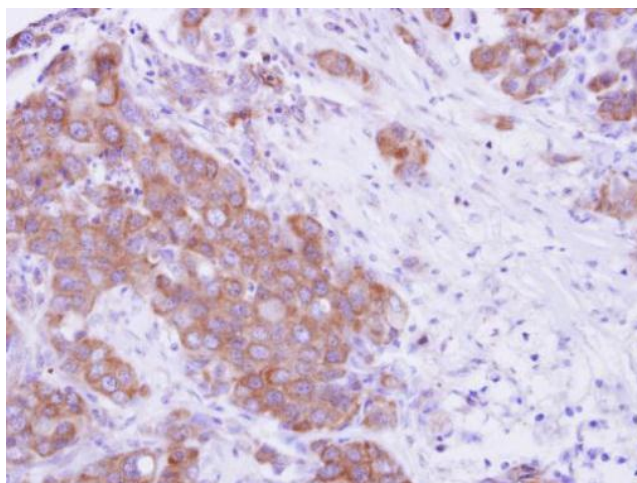
Synonyms: DLG3

Protein Families: Druggable Genome

Product images:



Sample (30 ug whole cell lysate). A:293T.
B:H1299. 7.5% SDS PAGE. TA308231 diluted at
1:1000



MPP3 antibody detects MPP3 protein at cytosol
on Breast Carcinoma by immunohistochemical
analysis. Sample: Paraffin-embedded Breast
Carcinoma. MPP3 antibody (TA308231) dilution:
1:500.