

Product datasheet for **TA308229**

PCDH1 Rabbit Polyclonal Antibody

Product data:

Product Type:	Primary Antibodies
Applications:	IHC, WB
Recommended Dilution:	IHC:1:100-1:1000; WB:1:500-1:3000
Reactivity:	Human (Predicted: Mouse, Bovine)
Host:	Rabbit
Isotype:	IgG
Clonality:	Polyclonal
Immunogen:	Recombinant fragment corresponding to a region within amino acids 710 and 971 of PCDH1 (Uniprot ID#Q08174)
Formulation:	0.1M Tris, 0.1M Glycine, 20% Glycerol (pH7). 0.01% Thimerosal was added as a preservative.
Concentration:	lot specific
Purification:	Purified by antigen-affinity chromatography.
Conjugation:	Unconjugated
Storage:	Store at -20°C as received.
Stability:	Stable for 12 months from date of receipt.
Predicted Protein Size:	115 kDa
Gene Name:	protocadherin 1
Database Link:	NP_002578 Entrez Gene 75599 Mouse Entrez Gene 5097 Human Q08174
Background:	This gene belongs to the protocadherin subfamily within the cadherin superfamily. The encoded protein is a membrane protein found at cell-cell boundaries. It is involved in neural cell adhesion, suggesting a possible role in neuronal development. The protein includes an extracellular region, containing 7 cadherin-like domains, a transmembrane region and a C-terminal cytoplasmic region. Cells expressing the protein showed cell aggregation activity. Alternative splicing occurs in this gene. [provided by RefSeq]
Synonyms:	PC42; PCDH42

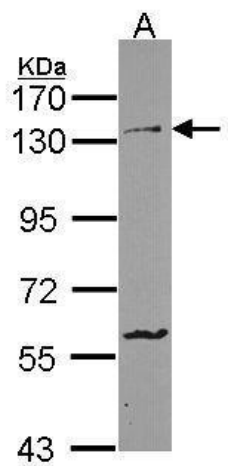


[View online »](#)

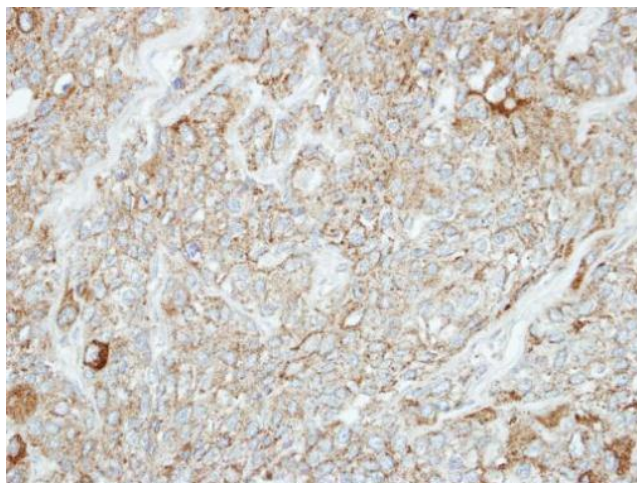
Note: Seq homology of immunogen across species: Mouse (97%), Bovine (98%)

Protein Families: Transcription Factors, Transmembrane

Product images:



Sample (30 ug of whole cell lysate). A: HCT116.
7.5% SDS PAGE. TA308229 diluted at 1:1000.



Immunohistochemical analysis of paraffin-embedded BT474 xenograft, using PCDH1 (TA308229) antibody at 1:100 dilution.