

Product datasheet for **TA308228**

MTAP Rabbit Polyclonal Antibody

Product data:

Product Type:	Primary Antibodies
Applications:	IHC, WB
Recommended Dilution:	IHC:1:100-1:1000; WB:1:500-1:3000
Reactivity:	Human, Mouse (Predicted: Rhesus Monkey)
Host:	Rabbit
Isotype:	IgG
Clonality:	Polyclonal
Immunogen:	Recombinant fragment corresponding to a region within amino acids 1 and 283 of MTAP (Uniprot ID#Q13126)
Formulation:	1XPBS, 20% Glycerol (pH7). 0.025% ProClin 300 was added as a preservative.
Concentration:	lot specific
Purification:	Purified by antigen-affinity chromatography.
Conjugation:	Unconjugated
Storage:	Store at -20°C as received.
Stability:	Stable for 12 months from date of receipt.
Predicted Protein Size:	31 kDa
Gene Name:	methylthioadenosine phosphorylase
Database Link:	NP_002442 Entrez Gene 66902 Mouse Entrez Gene 4507 Human Q13126
Background:	This gene encodes an enzyme that plays a major role in polyamine metabolism and is important for the salvage of both adenine and methionine. The encoded enzyme is deficient in many cancers because this gene and the tumor suppressor p16 gene are co-deleted. Multiple alternatively spliced transcript variants have been described for this gene, but their full-length natures remain unknown. [provided by RefSeq]
Synonyms:	BDMF; c86fus; DMSFH; DMSMFH; HEL-249; LGMBF; MSAP
Note:	Seq homology of immunogen across species: Rhesus Monkey (100%)

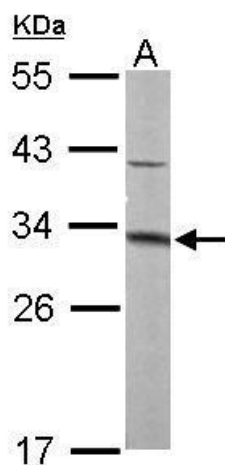


[View online »](#)

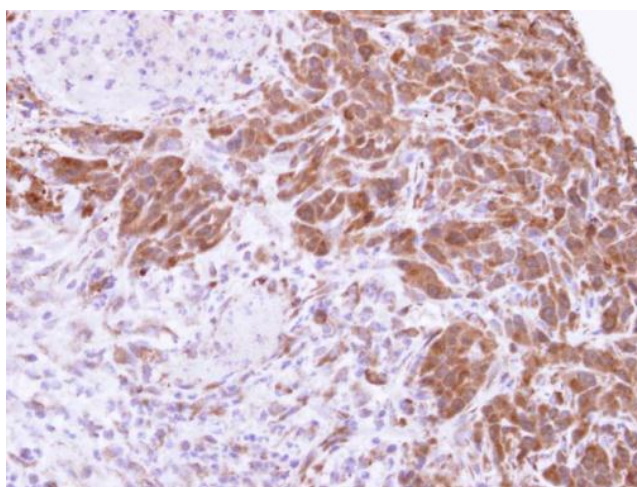
Protein Families: Druggable Genome

Protein Pathways: Cysteine and methionine metabolism, Metabolic pathways

Product images:



Sample (50 ug of whole cell lysate). A: mouse liver. 12% SDS PAGE. TA308228 diluted at 1:1000.



Immunohistochemical analysis of paraffin-embedded SAS xenograft, using MTAP (TA308228) antibody at 1:500 dilution.