

Product datasheet for **TA308227**

NDUFAB1 Rabbit Polyclonal Antibody

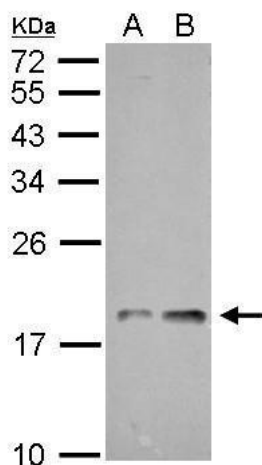
Product data:

Product Type:	Primary Antibodies
Applications:	IF, IHC, WB
Recommended Dilution:	ICC/IF:1:100-1:1000; IHC:1:100-1:1000; WB:1:1000-1:10000
Reactivity:	Human (Predicted: Xenopus, Pig, Chimpanzee, Bovine, Rhesus Monkey, X. tropicalis)
Host:	Rabbit
Isotype:	IgG
Clonality:	Polyclonal
Immunogen:	Synthetic peptide corresponding to a region within amino acids 93 and 156 of NDUFAB1 (Uniprot ID#O14561)
Formulation:	0.1M Tris, 0.1M Glycine, 10% Glycerol (pH7). 0.01% Thimerosal was added as a preservative.
Concentration:	lot specific
Purification:	Purified by antigen-affinity chromatography.
Conjugation:	Unconjugated
Storage:	Store at -20°C as received.
Stability:	Stable for 12 months from date of receipt.
Predicted Protein Size:	17 kDa
Gene Name:	NADH:ubiquinone oxidoreductase subunit AB1
Database Link:	NP_004994 Entrez Gene 4706 Human O14561
Synonyms:	ACP; FASN2A; SDAP
Note:	Seq homology of immunogen across species: Xenopus laevis (100%), Xenopus Tropicalis (100%), Pig (100%), Rhesus Monkey (100%), Chimpanzee (100%), Bovine (100%)
Protein Pathways:	Alzheimer's disease, Huntington's disease, Metabolic pathways, Oxidative phosphorylation, Parkinson's disease

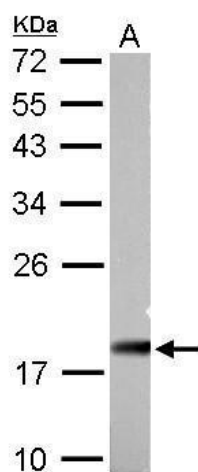


[View online »](#)

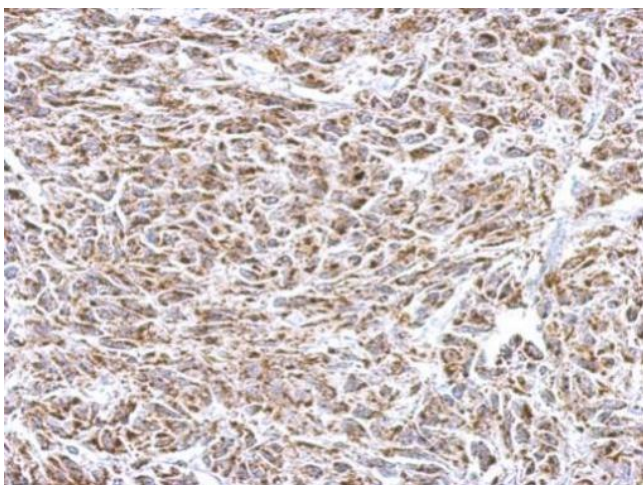
Product images:



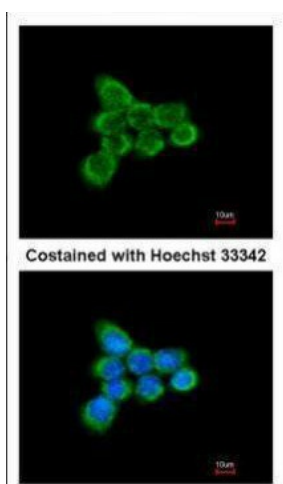
NDUFAB1 antibody detects NDUFAB1 protein by Western blot analysis. A. 30 ug GL261 whole cell lysate/extract. B. 30 ug C8D30 whole cell lysate/extract. 12 % SDS-PAGE. NDUFAB1 antibody (TA308227) dilution: 1:5000



NDUFAB1 antibody detects NDUFAB1 protein by Western blot analysis. A. 30 ug PC-12 whole cell lysate/extract. 12 % SDS-PAGE. NDUFAB1 antibody (TA308227) dilution: 1:5000



NDUFAB1 antibody detects NDUFAB1 protein at cytosol on U251 xenograft by immunohistochemical analysis. Sample: Paraffin-embedded U251 xenograft. NDUFAB1 antibody (TA308227) dilution: 1:500.



Immunofluorescence analysis of methanol-fixed A431, using NDUFAB1 (TA308227) antibody at 1:200 dilution.