

Product datasheet for **TA308226**

MTHFR Rabbit Polyclonal Antibody

Product data:

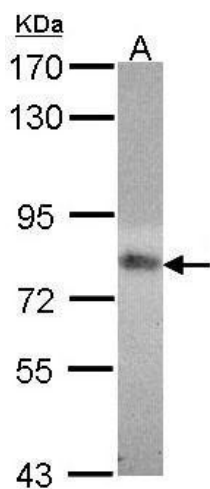
Product Type:	Primary Antibodies
Applications:	WB
Recommended Dilution:	WB:1:500-1:3000
Reactivity:	Human (Predicted: Mouse, Bovine)
Host:	Rabbit
Isotype:	IgG
Clonality:	Polyclonal
Immunogen:	Recombinant fragment corresponding to a region within amino acids 21 and 248 of MTHFR (Uniprot ID#P42898)
Formulation:	0.1M Tris, 0.1M Glycine, 10% Glycerol (pH7). 0.01% Thimerosal was added as a preservative.
Concentration:	lot specific
Purification:	Purified by antigen-affinity chromatography.
Conjugation:	Unconjugated
Storage:	Store at -20°C as received.
Stability:	Stable for 12 months from date of receipt.
Predicted Protein Size:	75 kDa
Gene Name:	methylenetetrahydrofolate reductase (NAD(P)H)
Database Link:	NP_005948 Entrez Gene 17769 Mouse Entrez Gene 4524 Human P42898
Background:	Methylenetetrahydrofolate reductase (EC 1.5.1.20) catalyzes the conversion of 5,10-methylenetetrahydrofolate to 5-methyltetrahydrofolate, a cosubstrate for homocysteine remethylation to methionine. [supplied by OMIM]
Synonyms:	5; 10-methylenetetrahydrofolate reductase (NADPH); methylenetetrahydrofolate reductase intermediate form; OTTHUMP00000002367; OTTHUMP00000002368
Note:	Seq homology of immunogen across species: Mouse (89%), Bovine (89%)
Protein Families:	Druggable Genome



[View online »](#)

Protein Pathways: Metabolic pathways, Methane metabolism, One carbon pool by folate

Product images:



Sample (30 ug of whole cell lysate). A: 293T. 7.5% SDS PAGE. TA308226 diluted at 1:1000.