

## Product datasheet for **TA308221**

### Glycogenin 2 (GYG2) Rabbit Polyclonal Antibody

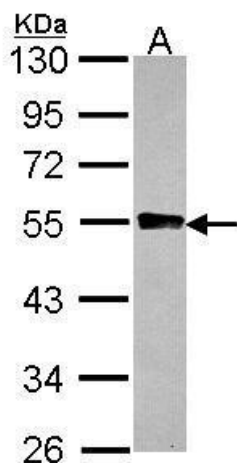
#### Product data:

Product Type:	Primary Antibodies
Applications:	IHC, WB
Recommended Dilution:	IHC:1:100-1:1000; WB:1:500-1:3000
Reactivity:	Human
Host:	Rabbit
Isotype:	IgG
Clonality:	Polyclonal
Immunogen:	Recombinant fragment corresponding to a region within amino acids 1 and 215 of GYG2 (Uniprot ID#O15488)
Formulation:	0.1M Tris, 0.1M Glycine, 20% Glycerol (pH7). 0.01% Thimerosal was added as a preservative.
Concentration:	lot specific
Purification:	Purified by antigen-affinity chromatography.
Conjugation:	Unconjugated
Storage:	Store at -20°C as received.
Stability:	Stable for 12 months from date of receipt.
Predicted Protein Size:	52 kDa
Gene Name:	glycogenin 2
Database Link:	<a href="#">NP_001073324</a> <a href="#">Entrez Gene 8908 Human O15488</a>
Synonyms:	GN-2; GN2

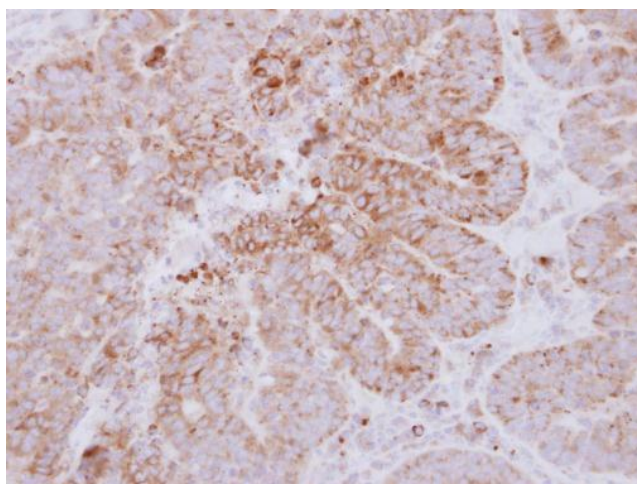


[View online »](#)

## Product images:



Sample (30 ug of whole cell lysate). A: 293T. 10% SDS PAGE. TA308221 diluted at 1:1000.



Immunohistochemical analysis of paraffin-embedded Colon ca, using GYG2 (TA308221) antibody at 1:500 dilution.