

Product datasheet for **TA308220**

FAM50A Rabbit Polyclonal Antibody

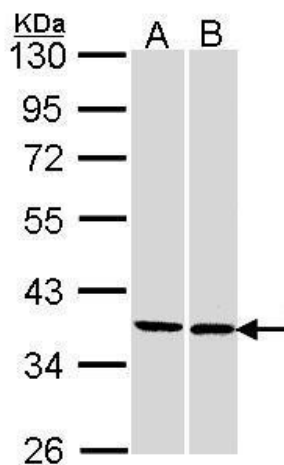
Product data:

Product Type:	Primary Antibodies
Applications:	WB
Recommended Dilution:	WB:1:500-1:3000
Reactivity:	Human (Predicted: Mouse, Rat, Zebrafish, Bovine, X. tropicalis)
Host:	Rabbit
Isotype:	IgG
Clonality:	Polyclonal
Immunogen:	Recombinant fragment corresponding to a region within amino acids 149 and 339 of FAM50A (Uniprot ID#Q14320)
Formulation:	0.1M Tris, 0.1M Glycine, 10% Glycerol (pH7). 0.01% Thimerosal was added as a preservative.
Concentration:	lot specific
Purification:	Purified by antigen-affinity chromatography.
Conjugation:	Unconjugated
Storage:	Store at -20°C as received.
Stability:	Stable for 12 months from date of receipt.
Predicted Protein Size:	40 kDa
Gene Name:	family with sequence similarity 50 member A
Database Link:	NP_004690 Entrez Gene 108160 MouseEntrez Gene 293862 RatEntrez Gene 9130 Human Q14320
Synonyms:	9F; DXS9928E; HXC-26; HXC26; XAP5
Note:	Seq homology of immunogen across species: Mouse (99%), Rat (99%), Zebrafish (93%), Bovine (99%), Xenopus tropicalis (97%)



[View online »](#)

Product images:



Sample (30 ug of whole cell lysate). A: 293T. B: H1299. 10% SDS PAGE. TA308220 diluted at 1:1000.