

Product datasheet for **TA308219**

L Kynurenine Hydrolase (KYNU) Rabbit Polyclonal Antibody

Product data:

Product Type:	Primary Antibodies
Applications:	IHC, WB
Recommended Dilution:	IHC:1:100-1:1000; WB:1:500-1:3000
Reactivity:	Human (Predicted: Mouse, Rat, Bovine)
Host:	Rabbit
Isotype:	IgG
Clonality:	Polyclonal
Immunogen:	Recombinant fragment corresponding to a region within amino acids 114 and 329 of KYNU (Uniprot ID#Q16719)
Formulation:	0.1M Tris, 0.1M Glycine, 20% Glycerol (pH7). 0.01% Thimerosal was added as a preservative.
Concentration:	lot specific
Purification:	Purified by antigen-affinity chromatography.
Conjugation:	Unconjugated
Storage:	Store at -20°C as received.
Stability:	Stable for 12 months from date of receipt.
Predicted Protein Size:	35 kDa
Gene Name:	kynureninase
Database Link:	NP_003928 Entrez Gene 70789 MouseEntrez Gene 116682 RatEntrez Gene 8942 Human Q16719
Background:	Kynureninase is a pyridoxal-5'-phosphate (pyridoxal-P) dependent enzyme that catalyzes the cleavage of L-kynurenine and L-3-hydroxykynurenine into anthranilic and 3-hydroxyanthranilic acids, respectively. Kynureninase is involved in the biosynthesis of NAD cofactors from tryptophan through the kynurenine pathway. Two transcript variants encoding different isoforms have been found for this gene. [provided by RefSeq]
Synonyms:	KYNUU
Note:	Seq homology of immunogen across species: Mouse (88%), Rat (88%), Bovine (89%)

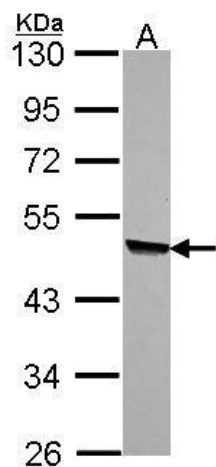


[View online »](#)

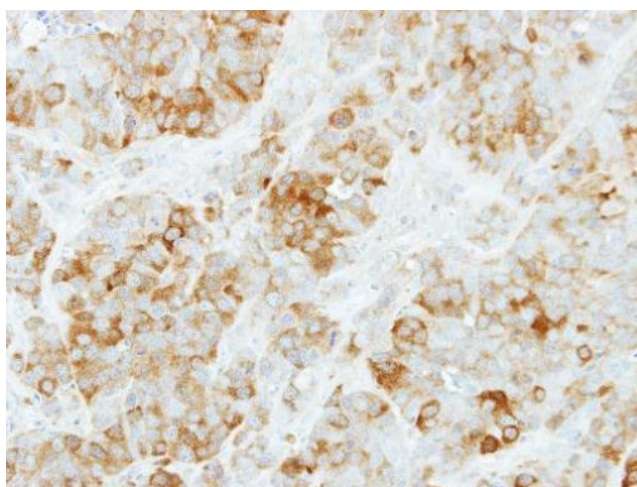
Protein Families: Protease

Protein Pathways: Metabolic pathways, Tryptophan metabolism

Product images:



Sample (30 ug of whole cell lysate). A: A549. 10% SDS PAGE. TA308219 diluted at 1:1000.



Immunohistochemical analysis of paraffin-embedded MCF7 xenograft, using KYNU (TA308219) antibody at 1:500 dilution.