

Product datasheet for **TA308218**

AP4M1 Rabbit Polyclonal Antibody

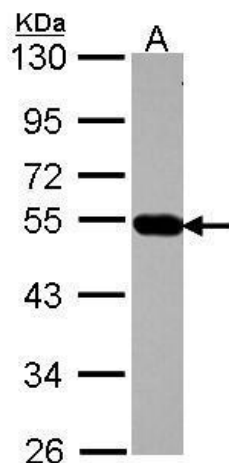
Product data:

Product Type:	Primary Antibodies
Applications:	IHC, WB
Recommended Dilution:	IHC:1:100-1:1000; WB:1:500-1:3000
Reactivity:	Human (Predicted: Mouse, Rat, Bovine)
Host:	Rabbit
Isotype:	IgG
Clonality:	Polyclonal
Immunogen:	Recombinant fragment corresponding to a region within amino acids 70 and 295 of AP4M1 (Uniprot ID#O00189)
Formulation:	0.1M Tris, 0.1M Glycine, 20% Glycerol (pH7). 0.01% Thimerosal was added as a preservative.
Concentration:	lot specific
Purification:	Purified by antigen-affinity chromatography.
Conjugation:	Unconjugated
Storage:	Store at -20°C as received.
Stability:	Stable for 12 months from date of receipt.
Predicted Protein Size:	50 kDa
Gene Name:	adaptor related protein complex 4 mu 1 subunit
Database Link:	NP_004713 Entrez Gene 11781 MouseEntrez Gene 304344 RatEntrez Gene 9179 Human O00189
Background:	This gene encodes a subunit of the heterotetrameric AP-4 complex. The encoded protein belongs to the adaptor complexes medium subunits family. This AP-4 complex is involved in the recognition and sorting of cargo proteins with tyrosine-based motifs from the trans-golgi network to the endosomal-lysosomal system. [provided by RefSeq]
Synonyms:	CPSQ3; MU-4; MU-ARP2; SPG50
Note:	Seq homology of immunogen across species: Mouse (97%), Rat (95%), Bovine (98%)
Protein Pathways:	Lysosome

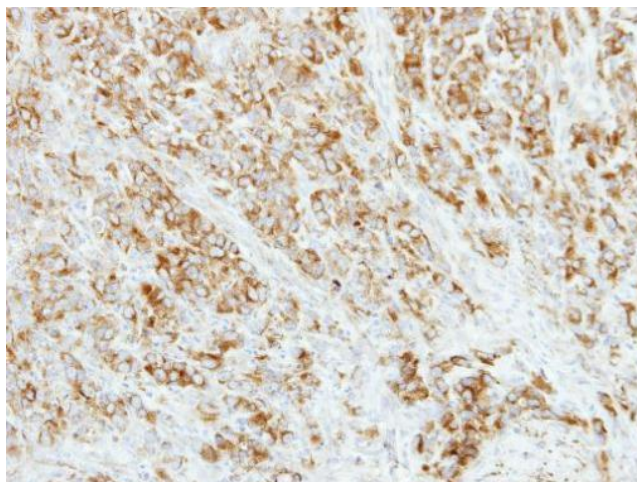


[View online »](#)

Product images:



Sample (30 ug of whole cell lysate). A: A431. 10% SDS PAGE. TA308218 diluted at 1:1000.



Immunohistochemical analysis of paraffin-embedded TOV-21G xenograft, using AP4M1 (TA308218) antibody at 1:500 dilution.