

Product datasheet for **TA308217**

DEDD Rabbit Polyclonal Antibody

Product data:

Product Type:	Primary Antibodies
Applications:	IF, WB
Recommended Dilution:	ICC/IF:1:100-1:1000; WB:1:500-1:3000
Reactivity:	Human (Predicted: Rat, Xenopus, Bovine, Rhesus Monkey, Mouse)
Host:	Rabbit
Isotype:	IgG
Clonality:	Polyclonal
Immunogen:	Synthetic peptide corresponding to a region within amino acids 129 and 223 of DEDD (Uniprot ID#O75618)
Formulation:	0.1M Tris, 0.1M Glycine, 10% Glycerol (pH7). 0.01% Thimerosal was added as a preservative.
Concentration:	lot specific
Purification:	Purified by antigen-affinity chromatography.
Conjugation:	Unconjugated
Storage:	Store at -20°C as received.
Stability:	Stable for 12 months from date of receipt.
Predicted Protein Size:	37 kDa
Gene Name:	death effector domain containing
Database Link:	NP_001034801 Entrez Gene 21945 Mouse Entrez Gene 83631 Rat Entrez Gene 9191 Human O75618
Background:	This gene encodes a protein that contains a death effector domain (DED). DED is a protein-protein interaction domain shared by adaptors, regulators and executors of the programmed cell death pathway. Overexpression of this gene was shown to induce weak apoptosis. Upon stimulation, this protein was found to translocate from cytoplasm to nucleus and colocalize with UBTF, a basal factor required for RNA polymerase I transcription, in the nucleolus. At least three transcript variants encoding the same protein have been found for this gene. [provided by RefSeq]
Synonyms:	CASP8IP1; DEDD1; DEFT; FLDED1; KE05

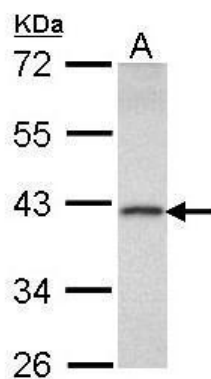


[View online »](#)

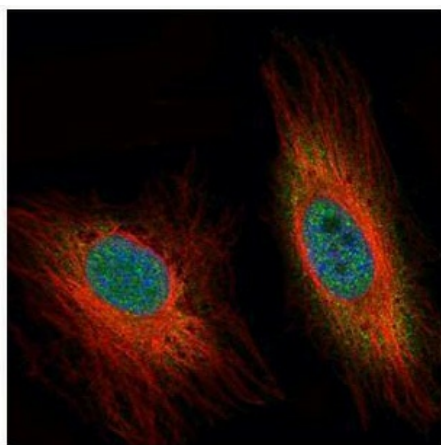
Note: Seq homology of immunogen across species: Mouse (100%), Rat (100%), Xenopus laevis (100%), Rhesus Monkey (100%), Bovine (100%)

Protein Families: Druggable Genome, Transcription Factors

Product images:



Sample (30 ug of whole cell lysate). A: Raji. 10% SDS PAGE. TA308217 diluted at 1:1000.



Confocal immunofluorescence analysis (Olympus FV10i) of paraformaldehyde-fixed HeLa, using DEDD (TA308217) antibody (Green) at 1:500 dilution. Alpha-tubulin filaments were labeled with anti-alpha tubulin antibody (Red) at 1:2500.