

Product datasheet for **TA308216**

CRLF1 Rabbit Polyclonal Antibody

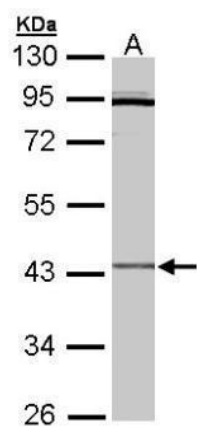
Product data:

Product Type:	Primary Antibodies
Applications:	WB
Recommended Dilution:	WB:1:500-1:3000
Reactivity:	Human (Predicted: Mouse, Rat)
Host:	Rabbit
Isotype:	IgG
Clonality:	Polyclonal
Immunogen:	Recombinant fragment corresponding to a region within amino acids 130 and 415 of CRLF1 (Uniprot ID#O75462)
Formulation:	0.1M Tris, 0.1M Glycine, 10% Glycerol (pH7). 0.01% Thimerosal was added as a preservative.
Concentration:	lot specific
Purification:	Purified by antigen-affinity chromatography.
Conjugation:	Unconjugated
Storage:	Store at -20°C as received.
Stability:	Stable for 12 months from date of receipt.
Predicted Protein Size:	46 kDa
Gene Name:	cytokine receptor like factor 1
Database Link:	NP_004741 Entrez Gene 12931 Mouse Entrez Gene 290655 Rat Entrez Gene 9244 Human O75462
Synonyms:	CISS; CISS1; CLF; CLF-1; NR6; zcytor5
Note:	Seq homology of immunogen across species: Mouse (99%), Rat (99%)
Protein Families:	Druggable Genome, Secreted Protein



[View online »](#)

Product images:



Sample (30 ug of whole cell lysate). A: Hep G2.
10% SDS PAGE. TA308216 diluted at 1:3000