

Product datasheet for **TA308213**

CAP1 Rabbit Polyclonal Antibody

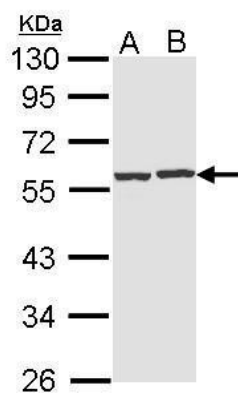
Product data:

Product Type:	Primary Antibodies
Applications:	IHC, WB
Recommended Dilution:	IHC:1:100-1:1000; WB:1:500-1:3000
Reactivity:	Human (Predicted: Chimpanzee)
Host:	Rabbit
Isotype:	IgG
Clonality:	Polyclonal
Immunogen:	Recombinant fragment corresponding to a region within amino acids 266 and 475 of CAP1 (Uniprot ID#Q01518)
Formulation:	0.1M Tris, 0.1M Glycine, 10% Glycerol (pH7). 0.01% Thimerosal was added as a preservative.
Concentration:	lot specific
Purification:	Purified by antigen-affinity chromatography.
Conjugation:	Unconjugated
Storage:	Store at -20°C as received.
Stability:	Stable for 12 months from date of receipt.
Predicted Protein Size:	52 kDa
Gene Name:	CAP, adenylate cyclase-associated protein 1 (yeast)
Database Link:	NP_001099000 Entrez Gene 10487 Human Q01518
Background:	The protein encoded by this gene is related to the <i>S. cerevisiae</i> CAP protein, which is involved in the cyclic AMP pathway. The human protein is able to interact with other molecules of the same protein, as well as with CAP2 and actin. Alternatively spliced transcript variants have been identified. [provided by RefSeq]
Synonyms:	CAP; CAP1-PEN
Note:	Seq homology of immunogen across species: Chimpanzee (100%)
Protein Families:	Druggable Genome

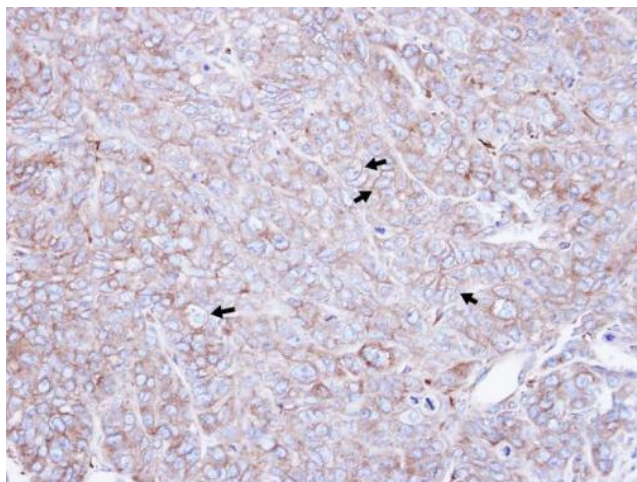


[View online »](#)

Product images:



Sample (30 ug of whole cell lysate). A: Hep G2. B: Raji. 10% SDS PAGE. TA308213 diluted at 1:1000.



Immunohistochemical analysis of paraffin-embedded DLD1 xenograft, using CAP1 (TA308213) antibody at 1:500 dilution.