

Product datasheet for **TA308212**

SLC25A13 Rabbit Polyclonal Antibody

Product data:

Product Type:	Primary Antibodies
Applications:	IHC, WB
Recommended Dilution:	IHC:1:100-1:1000; WB:1:500-1:3000
Reactivity:	Human, Mouse (Predicted: Chicken)
Host:	Rabbit
Isotype:	IgG
Clonality:	Polyclonal
Immunogen:	Recombinant fragment corresponding to a region within amino acids 248 and 535 of SLC25A13 (Uniprot ID#Q9UJS0)
Formulation:	1XPBS, 20% Glycerol (pH7). 0.025% ProClin 300 was added as a preservative.
Concentration:	lot specific
Purification:	Purified by antigen-affinity chromatography.
Conjugation:	Unconjugated
Storage:	Store at -20°C as received.
Stability:	Stable for 12 months from date of receipt.
Predicted Protein Size:	74 kDa
Gene Name:	solute carrier family 25 member 13
Database Link:	NP_055066 Entrez Gene 50799 Mouse Entrez Gene 10165 Human Q9UJS0
Background:	This gene is a member of the mitochondrial carrier family. The encoded protein contains four EF-hand Ca(2+) binding motifs in the N-terminal domain, and localizes to mitochondria. The protein catalyzes the exchange of aspartate for glutamate and a proton across the inner mitochondrial membrane, and is stimulated by calcium on the external side of the inner mitochondrial membrane. Mutations in this gene result in citrullinemia, type II. Multiple transcript variants encoding different isoforms have been found for this gene. [provided by RefSeq]
Synonyms:	ARALAR2; CITRIN; CTLN2

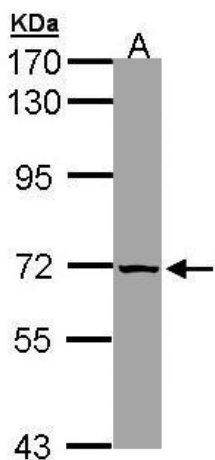


[View online »](#)

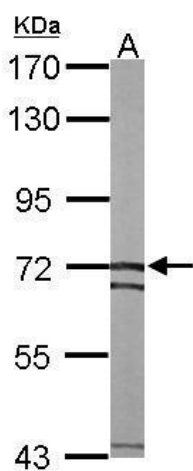
Note: Seq homology of immunogen across species: Chicken (94%)

Protein Families: Druggable Genome

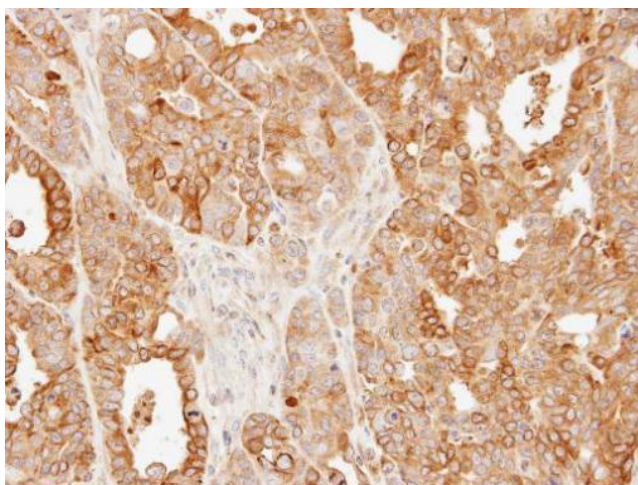
Product images:



Sample (30 ug of whole cell lysate). A: 293T. 7.5% SDS PAGE. TA308212 diluted at 1:1000.



Sample (50 ug of whole cell lysate). A: mouse liver. 7.5% SDS PAGE. TA308212 diluted at 1:1000.



Immunohistochemical analysis of paraffin-embedded N87 xenograft, using SLC25A13 (TA308212) antibody at 1:500 dilution.