

Product datasheet for **TA308211**

Mannose Phosphate Isomerase (MPI) Rabbit Polyclonal Antibody

Product data:

Product Type:	Primary Antibodies
Applications:	WB
Recommended Dilution:	WB:1:500-1:3000
Reactivity:	Human (Predicted: Mouse, Rat, Cow)
Host:	Rabbit
Isotype:	IgG
Clonality:	Polyclonal
Immunogen:	Recombinant fragment contain a sequence corresponding to a region within amino acids 1 and 154 of MPI (Uniprot ID#P34949)
Formulation:	0.1M Tris, 0.1M Glycine, 20% Glycerol (pH7). 0.01% Thimerosal was added as a preservative.
Concentration:	lot specific
Purification:	Purified by antigen-affinity chromatography.
Conjugation:	Unconjugated
Storage:	Store at -20°C as received.
Stability:	Stable for 12 months from date of receipt.
Predicted Protein Size:	40 kDa
Gene Name:	mannose phosphate isomerase
Database Link:	NP_002426 Entrez Gene 110119 MouseEntrez Gene 300741 RatEntrez Gene 4351 Human P34949
Background:	Phosphomannose isomerase catalyzes the interconversion of fructose-6-phosphate and mannose-6-phosphate and plays a critical role in maintaining the supply of D-mannose derivatives, which are required for most glycosylation reactions. Mutations in the MPI gene were found in patients with carbohydrate-deficient glycoprotein syndrome, type Ib. [provided by RefSeq]
Synonyms:	CDG1B; PMI; PMI1
Note:	Seq homology of immunogen across species: mouse (90%), Rat (91%), cow (95%)

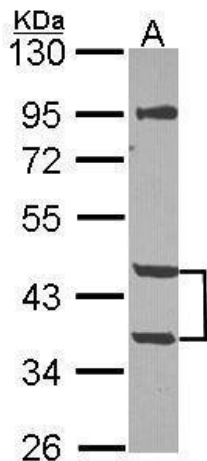


[View online »](#)

Protein Families: ES Cell Differentiation/IPS

Protein Pathways: Amino sugar and nucleotide sugar metabolism, Fructose and mannose metabolism, Metabolic pathways

Product images:



Sample (30 ug of whole cell lysate). A: NT2D1.
10% SDS PAGE. TA308211 diluted at 1:1000.