

Product datasheet for **TA308210**

SCAMP3 Rabbit Polyclonal Antibody

Product data:

Product Type:	Primary Antibodies
Applications:	IF, IHC, WB
Recommended Dilution:	ICC/IF:1:100-1:1000; IHC:1:100-1:1000; WB:1:500-1:3000
Reactivity:	Human (Predicted: Pig, Bovine)
Host:	Rabbit
Isotype:	IgG
Clonality:	Polyclonal
Immunogen:	Recombinant fragment corresponding to a region within amino acids 1 and 165 of SCAMP3 (Uniprot ID#O14828)
Formulation:	0.1M Tris, 0.1M Glycine, 10% Glycerol (pH7). 0.01% Thimerosal was added as a preservative.
Concentration:	lot specific
Purification:	Purified by antigen-affinity chromatography.
Conjugation:	Unconjugated
Storage:	Store at -20°C as received.
Stability:	Stable for 12 months from date of receipt.
Predicted Protein Size:	38 kDa
Gene Name:	secretory carrier membrane protein 3
Database Link:	NP_443069 Entrez Gene 10067 Human O14828
Background:	This gene product belongs to the SCAMP family of proteins which are secretory carrier membrane proteins. They function as carriers to the cell surface in post-golgi recycling pathways. Different family members are highly related products of distinct genes, and are usually expressed together. These findings suggest that the SCAMPs may function at the same site during vesicular transport rather than in separate pathways. Two transcript variants encoding different isoforms have been found for this gene. [provided by RefSeq]
Synonyms:	C1orf3

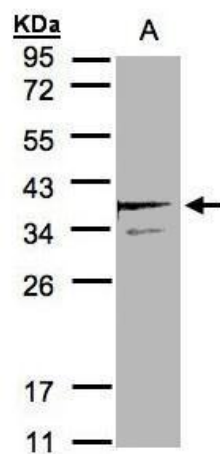


[View online »](#)

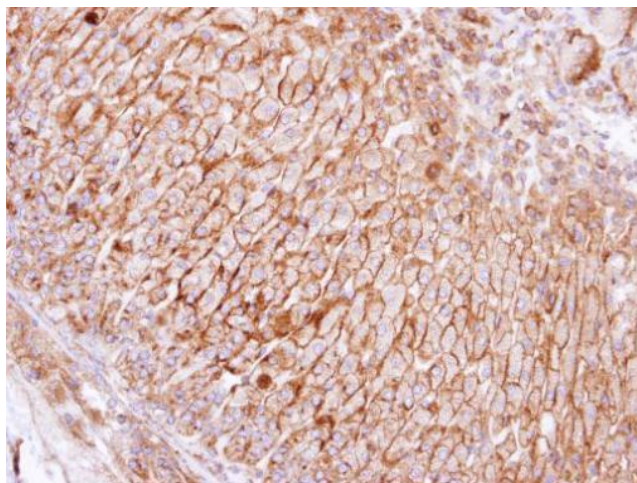
Note: Seq homology of immunogen across species: Pig (92%), Bovine (90%)

Protein Families: Transmembrane

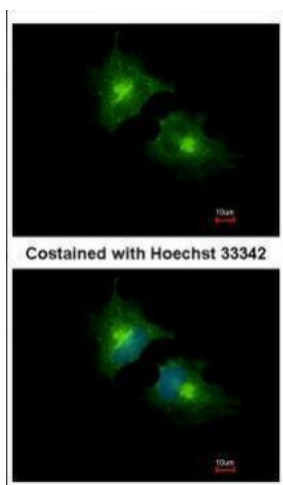
Product images:



Sample (30 ug of whole cell lysate). A: MOLT4.
12% SDS PAGE. TA308210 diluted at 1:2000



Immunohistochemical analysis of paraffin-embedded adrenal gland, using SCAMP3 (TA308210) antibody at 1:100 dilution.



Immunofluorescence analysis of methanol-fixed HeLa, using SCAMP3 (TA308210) antibody at 1:1000 dilution.