

Product datasheet for **TA308209**

CACNA1S Rabbit Polyclonal Antibody

Product data:

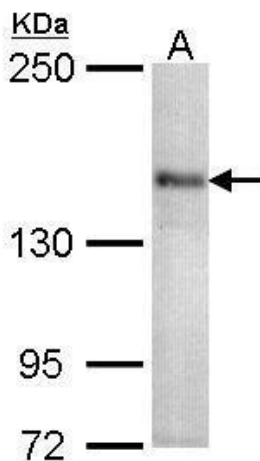
Product Type:	Primary Antibodies
Applications:	IHC, WB
Recommended Dilution:	IHC:1:100-1:1000; WB:1:500-1:3000
Reactivity:	Human (Predicted: Mouse, Feline, Rabbit, Rat)
Host:	Rabbit
Isotype:	IgG
Clonality:	Polyclonal
Immunogen:	Recombinant fragment corresponding to a region within amino acids 544 and 885 of CACNA1S (Uniprot ID#Q13698)
Formulation:	1XPBS, 10% Glycerol (pH7). 0.01% Thimerosal was added as a preservative.
Concentration:	lot specific
Purification:	Purified by antigen-affinity chromatography.
Conjugation:	Unconjugated
Storage:	Store at -20°C as received.
Stability:	Stable for 12 months from date of receipt.
Predicted Protein Size:	212 kDa
Gene Name:	calcium voltage-gated channel subunit alpha1 S
Database Link:	NP_000060 Entrez Gene 12292 Mouse Entrez Gene 682930 Rat Entrez Gene 779 Human Q13698
Background:	This gene encodes one of the five subunits of the slowly inactivating L-type voltage-dependent calcium channel in skeletal muscle cells. Mutations in this gene have been associated with hypokalemic periodic paralysis, thyrotoxic periodic paralysis and malignant hyperthermia susceptibility. [provided by RefSeq]
Synonyms:	CACNL1A3; Cav1.1; CCHL1A3; HOKPP; HOKPP1; hypoPP; MHS5; TTPP1
Note:	Seq homology of immunogen across species: Mouse (93%), Cat (95%), Rabbit (94%), Rat (95%)
Protein Families:	Druggable Genome, Ion Channels: Calcium, Transmembrane



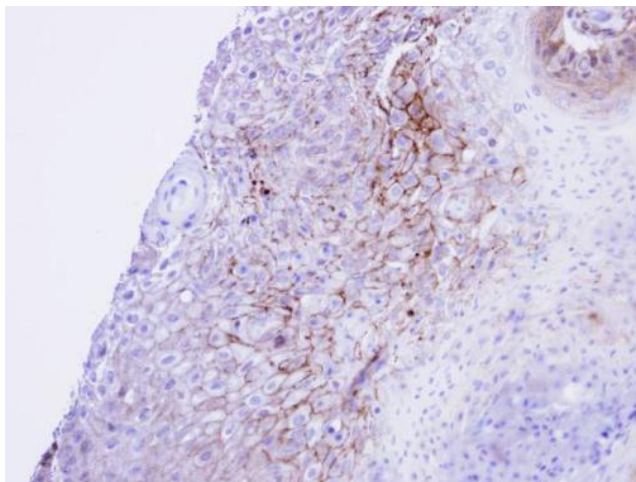
[View online »](#)

Protein Pathways:

Alzheimer's disease, Arrhythmogenic right ventricular cardiomyopathy (ARVC), Calcium signaling pathway, Cardiac muscle contraction, Dilated cardiomyopathy, GnRH signaling pathway, Hypertrophic cardiomyopathy (HCM), MAPK signaling pathway, Vascular smooth muscle contraction

Product images:


Sample (30 ug of whole cell lysate). A: 293T. 5% SDS PAGE. TA308209 diluted at 1:1000.



Immunohistochemical analysis of paraffin-embedded Cal27 xenograft, using CACNA1S (TA308209) antibody at 1:100 dilution.