

Product datasheet for **TA308207**

GMF beta (GMFB) Rabbit Polyclonal Antibody

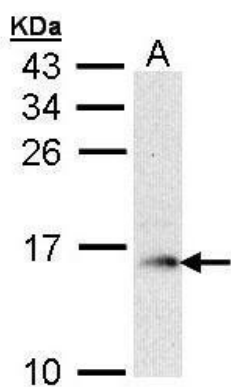
Product data:

Product Type:	Primary Antibodies
Applications:	IHC, WB
Recommended Dilution:	IHC:1:100-1:1000; WB:1:500-1:3000
Reactivity:	Human (Predicted: Bovine)
Host:	Rabbit
Isotype:	IgG
Clonality:	Polyclonal
Immunogen:	Recombinant fragment corresponding to a region within amino acids 1 and 142 of GMF beta (Uniprot ID#P60983)
Formulation:	0.1M Tris, 0.1M Glycine, 10% Glycerol (pH7). 0.01% Thimerosal was added as a preservative.
Concentration:	lot specific
Purification:	Purified by antigen-affinity chromatography.
Conjugation:	Unconjugated
Storage:	Store at -20°C as received.
Stability:	Stable for 12 months from date of receipt.
Predicted Protein Size:	17 kDa
Gene Name:	glia maturation factor beta
Database Link:	NP_004115 Entrez Gene 2764 Human P60983
Synonyms:	GMF
Note:	Seq homology of immunogen across species: Bovine (100%)

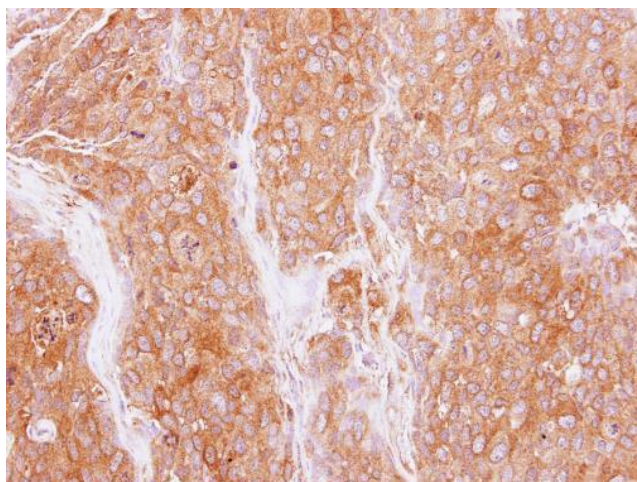


[View online »](#)

Product images:



Sample (30 ug of whole cell lysate). A: Raji. 15% SDS PAGE. TA308207 diluted at 1:1000.



Immunohistochemical analysis of paraffin-embedded BT474 xenograft, using GMF beta (TA308207) antibody at 1:500 dilution.