

Product datasheet for **TA308205**

Cytochrome C Oxidase subunit VIb (COX6B1) Rabbit Polyclonal Antibody

Product data:

Product Type:	Primary Antibodies
Applications:	IF, IHC, WB
Recommended Dilution:	ICC/IF:1:100-1:1000; IHC:1:100-1:1000; WB:1:500-1:3000
Reactivity:	Human (Predicted: Bovine, Rhesus Monkey, X. tropicalis)
Host:	Rabbit
Isotype:	IgG
Clonality:	Polyclonal
Immunogen:	Synthetic peptide corresponding to a region within amino acids 23 and 86 of COX6B1 (Uniprot ID#P14854)
Formulation:	0.1M Tris, 0.1M Glycine, 10% Glycerol (pH7). 0.01% Thimerosal was added as a preservative.
Concentration:	lot specific
Purification:	Purified by antigen-affinity chromatography.
Conjugation:	Unconjugated
Storage:	Store at -20°C as received.
Stability:	Stable for 12 months from date of receipt.
Predicted Protein Size:	10 kDa
Gene Name:	cytochrome c oxidase subunit 6B1
Database Link:	NP_001854 Entrez Gene 1340 Human P14854

Background: Cytochrome c oxidase (COX), the terminal enzyme of the mitochondrial respiratory chain, catalyzes the electron transfer from reduced cytochrome c to oxygen. It is a heteromeric complex consisting of 3 catalytic subunits encoded by mitochondrial genes and multiple structural subunits encoded by nuclear genes. The mitochondrially-encoded subunits function in electron transfer, and the nuclear-encoded subunits may be involved in the regulation and assembly of the complex. This nuclear gene encodes subunit VIb. Three pseudogenes COX6BP-1, COX6BP-2 and COX6BP-3 have been found on chromosomes 7, 17 and 22q13.1-13.2, respectively. [provided by RefSeq]



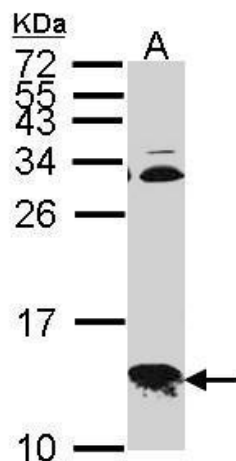
[View online »](#)

Synonyms: COX6B; COXG; COXVIb1

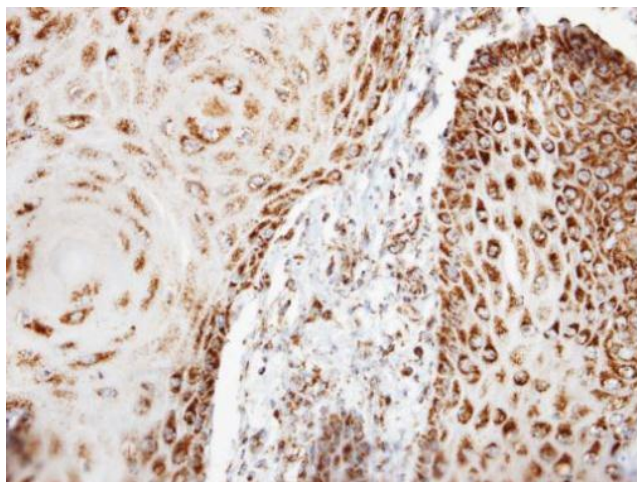
Note: Seq homology of immunogen across species: Xenopus Tropicalis (86%), Rhesus Monkey (100%), Bovine (86%)

Protein Pathways: Alzheimer's disease, Cardiac muscle contraction, Huntington's disease, Metabolic pathways, Oxidative phosphorylation, Parkinson's disease

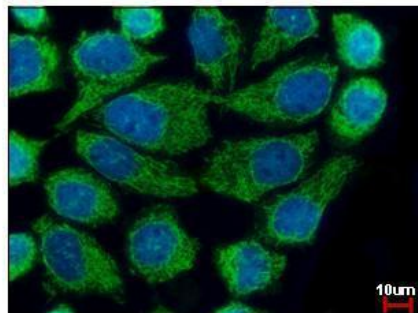
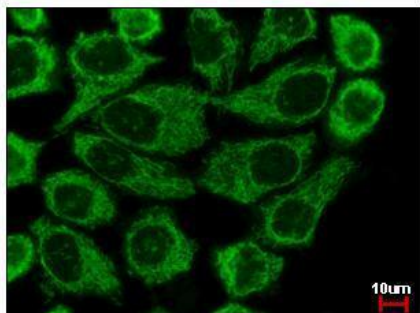
Product images:



Sample (30 ug of whole cell lysate). A: Hep G2. 15% SDS PAGE. COX6B1 antibody. TA308205 diluted at 1:1000.



Immunohistochemical analysis of paraffin-embedded BCC3 xenograft, using COX6B1 (TA308205) antibody at 1:100 dilution.



COX6B1 antibody [N2C3] detects COX6B1 protein at mitochondria by immunofluorescent analysis. Sample: A431 cells were fixed in 4% paraformaldehyde at RT for 15 min. Green: COX6B1 protein stained by COX6B1 antibody [N2C3] (TA308205) diluted at 1:500. Blue: