

## Product datasheet for **TA308204**

### CYP24A1 Rabbit Polyclonal Antibody

#### Product data:

Product Type:	Primary Antibodies
Applications:	IHC, WB
Recommended Dilution:	WB:1:500-1:3000
Reactivity:	Human (Predicted: Mouse, Rat)
Host:	Rabbit
Isotype:	IgG
Clonality:	Polyclonal
Immunogen:	Recombinant fragment corresponding to a region within amino acids 241 and 514 of CYP24A1 (Uniprot ID#Q07973)
Formulation:	0.1M Tris, 0.1M Glycine, 10% Glycerol (pH7). 0.01% Thimerosal was added as a preservative.
Purification:	Purified by antigen-affinity chromatography.
Conjugation:	Unconjugated
Storage:	Store at -20°C as received.
Stability:	Stable for 12 months from date of receipt.
Predicted Protein Size:	59 kDa
Gene Name:	cytochrome P450 family 24 subfamily A member 1
Database Link:	<a href="#">NP_001122387</a> <a href="#">Entrez Gene 13081 Mouse</a> <a href="#">Entrez Gene 25279 Rat</a> <a href="#">Entrez Gene 1591 Human</a> <a href="#">Q07973</a>
Background:	This gene encodes a member of the cytochrome P450 superfamily of enzymes. The cytochrome P450 proteins are monooxygenases which catalyze many reactions involved in drug metabolism and synthesis of cholesterol, steroids and other lipids. This mitochondrial protein initiates the degradation of 1,25-dihydroxyvitamin D3, the physiologically active form of vitamin D3, by hydroxylation of the side chain. In regulating the level of vitamin D3, this enzyme plays a role in calcium homeostasis and the vitamin D endocrine system. Alternatively spliced transcript variants encoding different isoforms have been found for this gene. [provided by RefSeq]
Synonyms:	CP24; CYP24; HCAI; P450-CC24

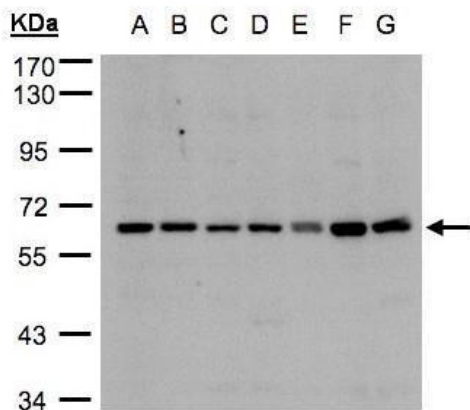


[View online »](#)

**Note:** Seq homology of immunogen across species: mouse (87%), Rat (88%)

**Protein Families:** Druggable Genome

**Product images:**



Sample (30ug whole cell lysate). A: 293T. B: A431. C: H1299. D: HeLa S3. E: Hep G2. F: MOLT4. G: Raji. 7.5% SDS PAGE. TA308204 diluted at 1:3000

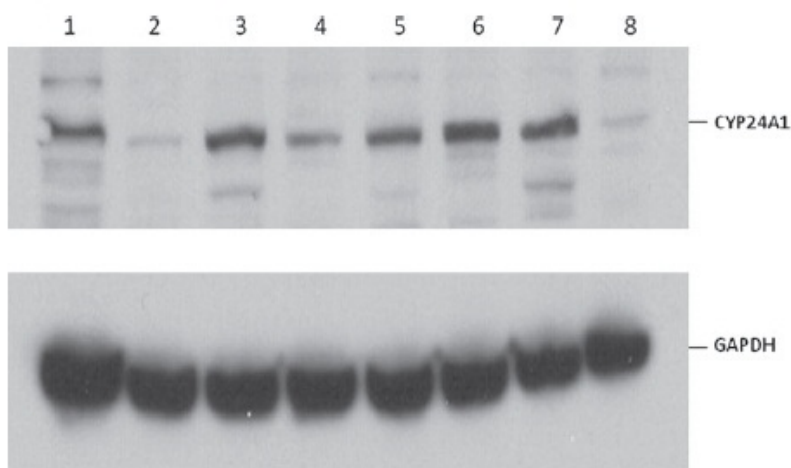
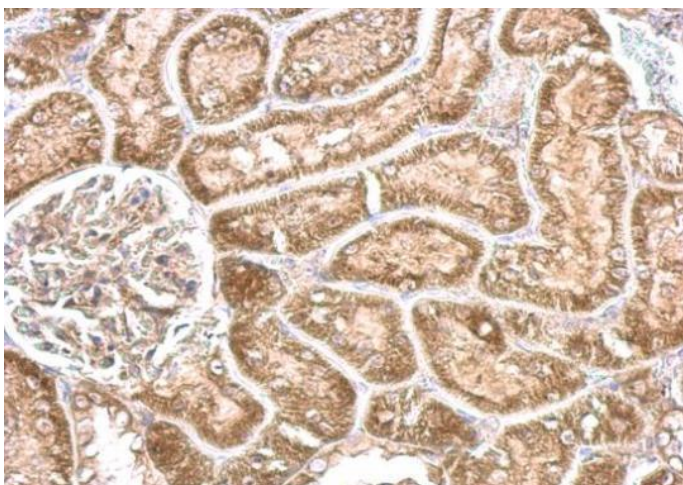


Figure from citation: Western Blot of CYP24A1 protein level by using anti-CYP24A1 antibody in human thyroid cancer cell line. Dilution: 1:3000  
[View Citation](#)



CYP24A1 antibody detects CYP24A1 protein at cytosol on mouse kidney by immunohistochemical analysis. Sample: Paraffin-embedded mouse kidney. CYP24A1 antibody (TA308204) dilution: 1:500.