

Product datasheet for **TA308203**

TPP1 Rabbit Polyclonal Antibody

Product data:

Product Type:	Primary Antibodies
Applications:	IF, IHC, WB
Recommended Dilution:	ICC/IF:1:100-1:1000; IHC:1:100-1:1000; WB:1:500-1:3000
Reactivity:	Human (Predicted: Chimpanzee)
Host:	Rabbit
Isotype:	IgG
Clonality:	Polyclonal
Immunogen:	Recombinant fragment corresponding to a region within amino acids 66 and 324 of TPP1 (Uniprot ID#O14773)
Formulation:	0.1M Tris, 0.1M Glycine, 10% Glycerol (pH7). 0.01% Thimerosal was added as a preservative.
Concentration:	lot specific
Purification:	Purified by antigen-affinity chromatography.
Conjugation:	Unconjugated
Storage:	Store at -20°C as received.
Stability:	Stable for 12 months from date of receipt.
Predicted Protein Size:	61 kDa
Gene Name:	tripeptidyl peptidase 1
Database Link:	NP_000382 Entrez Gene 1200 Human O14773
Background:	This gene encodes a member of the sedolisin family of serine proteases. The protease functions in the lysosome to cleave N-terminal tripeptides from substrates, and has weaker endopeptidase activity. It is synthesized as a catalytically-inactive enzyme which is activated and auto-proteolyzed upon acidification. Mutations in this gene result in late-infantile neuronal ceroid lipofuscinosis, which is associated with the failure to degrade specific neuropeptides and a subunit of ATP synthase in the lysosome. [provided by RefSeq]
Synonyms:	CLN2; GIG1; LPIC; SCAR7; TPP-1



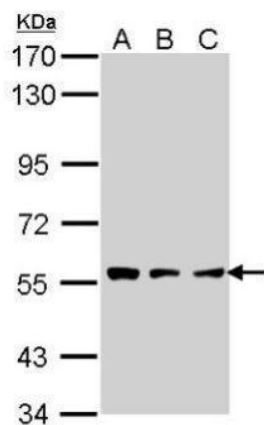
[View online »](#)

Note: Seq homology of immunogen across species: Chimpanzee (100%)

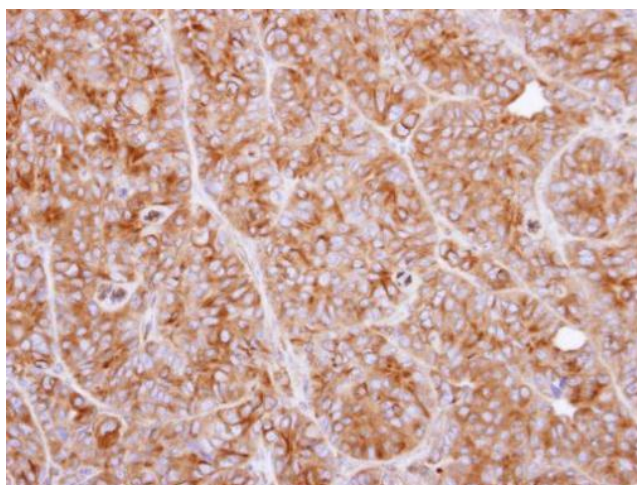
Protein Families: Protease

Protein Pathways: Lysosome

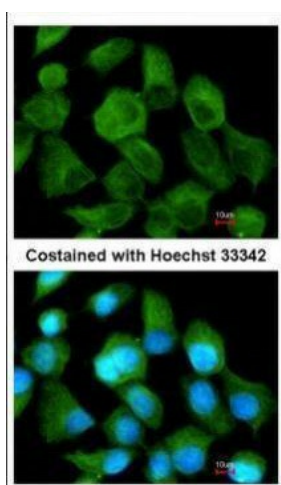
Product images:



Sample (30 ug of whole cell lysate). A: A431. B: H1299. C: HeLa. 7.5% SDS PAGE. TA308203 diluted at 1:1000.



Immunohistochemical analysis of paraffin-embedded SW480 xenograft, using TPP1 (TA308203) antibody at 1:100 dilution.



Immunofluorescence analysis of methanol-fixed A431, using TPP1 (TA308203) antibody at 1:200 dilution.