

Product datasheet for **TA308201**

Alkaline Phosphatase (ALPPL2) Rabbit Polyclonal Antibody

Product data:

Product Type:	Primary Antibodies
Applications:	IF, IHC, WB
Recommended Dilution:	ICC/IF:1:100-1:1000; IHC:1:100-1:1000; WB:1:500-1:3000
Reactivity:	Human (Predicted: Mouse)
Host:	Rabbit
Isotype:	IgG
Clonality:	Polyclonal
Immunogen:	Recombinant fragment contain a sequence corresponding to a region within amino acids 46 and 344 of ALPPL2 (Uniprot ID#P10696)
Formulation:	0.1M Tris, 0.1M Glycine, 20% Glycerol (pH7). 0.01% Thimerosal was added as a preservative.
Concentration:	lot specific
Purification:	Purified by antigen-affinity chromatography.
Conjugation:	Unconjugated
Storage:	Store at -20°C as received.
Stability:	Stable for 12 months from date of receipt.
Predicted Protein Size:	57 kDa
Gene Name:	alkaline phosphatase, placental like 2
Database Link:	NP_112603 Entrez Gene 11650 Mouse Entrez Gene 251 Human P10696
Background:	There are at least four distinct but related alkaline phosphatases: intestinal, placental, placental-like, and liver/bone/kidney (tissue non-specific). The product of this gene is a membrane bound glycosylated enzyme, localized to testis, thymus and certain germ cell tumors, that is closely related to both the placental and intestinal forms of alkaline phosphatase. [provided by RefSeq]
Synonyms:	ALPG; ALPPL; GCAP
Note:	Seq homology of immunogen across species: Mouse (80%)

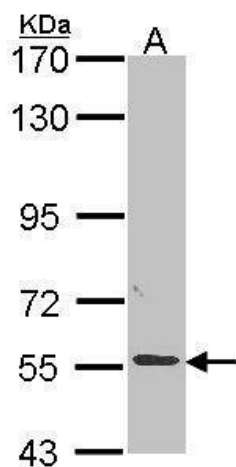


[View online »](#)

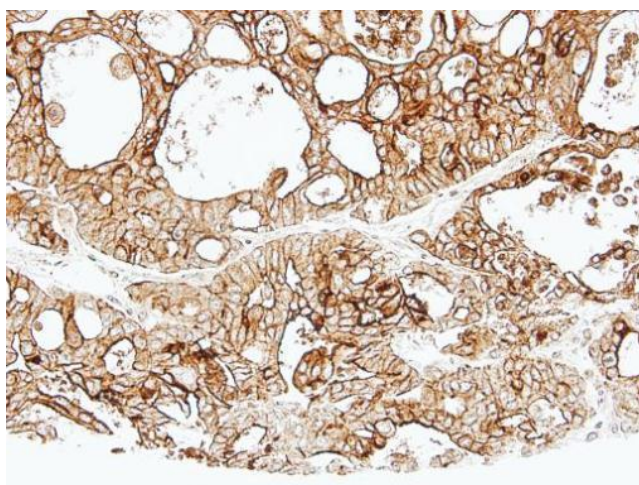
Protein Families: Druggable Genome

Protein Pathways: Folate biosynthesis, Metabolic pathways

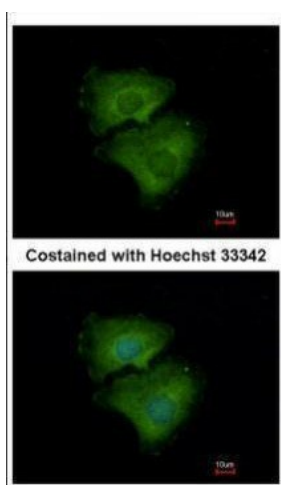
Product images:



Sample (30 ug of whole cell lysate). A: A549. 7.5% SDS PAGE. ALPPL2 antibody. TA308201 diluted at 1:1000.



Immunohistochemical analysis of paraffin-embedded Breast, using ALPPL2 (TA308201) antibody at 1:500 dilution.



Immunofluorescence analysis of methanol-fixed A549, using ALPPL2 (TA308201) antibody at 1:500 dilution.