

Product datasheet for **TA308198**

ARF5 Rabbit Polyclonal Antibody

Product data:

Product Type:	Primary Antibodies
Applications:	IF, IHC, WB
Recommended Dilution:	ICC/IF:1:100-1:1000; IHC:1:100-1:1000; WB:1:500-1:3000
Reactivity:	Human (Predicted: Mouse, Rat, Pig, Chicken, Sheep, Bovine)
Host:	Rabbit
Isotype:	IgG
Clonality:	Polyclonal
Immunogen:	Synthetic peptide corresponding to a region within amino acids 49 and 180 of ARF5
Formulation:	1XPBS, 20% Glycerol (pH7). 0.025% ProClin 300 was added as a preservative.
Concentration:	lot specific
Purification:	Purified by antigen-affinity chromatography.
Conjugation:	Unconjugated
Storage:	Store at -20°C as received.
Stability:	Stable for 12 months from date of receipt.
Predicted Protein Size:	21 kDa
Gene Name:	ADP ribosylation factor 5
Database Link:	NP_001653 Entrez Gene 11844 Mouse Entrez Gene 79117 Rat Entrez Gene 381 Human P84085

Background: ADP-ribosylation factor 5 (ARF5) is a member of the human ARF gene family. These genes encode small guanine nucleotide-binding proteins that stimulate the ADP-ribosyltransferase activity of cholera toxin and play a role in vesicular trafficking and as activators of phospholipase D. The gene products include 6 ARF proteins and 11 ARF-like proteins and constitute 1 family of the RAS superfamily. The ARF proteins are categorized as class I (ARF1, ARF2, and ARF3), class II (ARF4 and ARF5) and class III (ARF6). The members of each class share a common gene organization. The ARF5 gene spans approximately 3.2kb of genomic DNA and contains six exons and five introns. [provided by RefSeq]

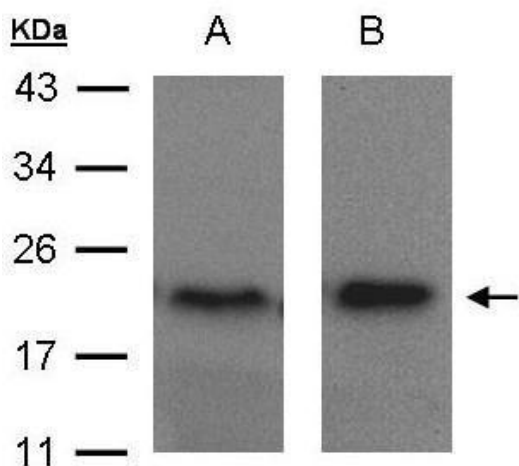
Synonyms: ADP-ribosylation factor 5



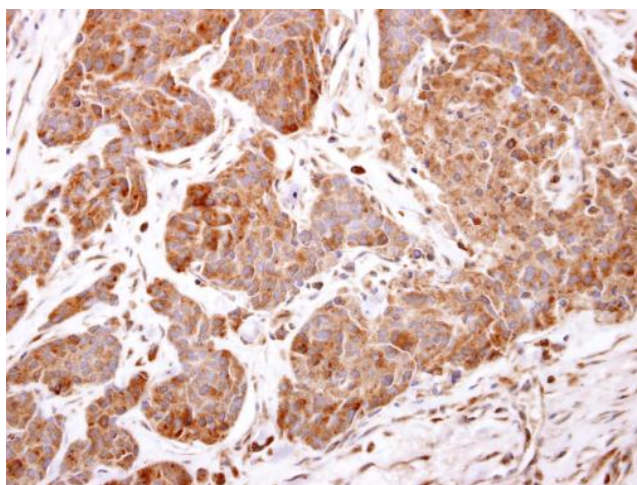
[View online »](#)

Note: Seq homology of immunogen across species: Mouse (100%), Rat (100%), Pig (100%), Chicken (93%), Sheep (100%), Bovine (100%)

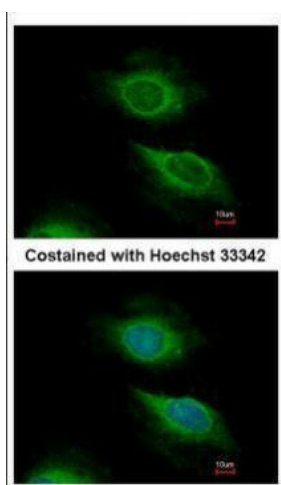
Product images:



Sample (30 ug of whole cell lysate). A:MOLT4. B:Raji. 15% SDS PAGE. TA308198 diluted at 1:1500



ARF5 antibody detects ARF5 protein at cytosol on human breast carcinoma by immunohistochemical analysis. Sample: Paraffin-embedded human breast carcinoma. ARF5 antibody (TA308198) dilution: 1:500.



Immunofluorescence analysis of methanol-fixed HeLa, using ARF5 (TA308198) antibody at 1:500 dilution.