

Product datasheet for **TA308196**

VPS11 Rabbit Polyclonal Antibody

Product data:

Product Type:	Primary Antibodies
Applications:	IF, IHC, WB
Recommended Dilution:	ICC/IF:1:100-1:1000; IHC:1:100-1:1000; WB:1:500-1:3000
Reactivity:	Human (Predicted: Mouse, Rat, Zebrafish, Bovine, X. tropicalis, Medaka fish)
Host:	Rabbit
Isotype:	IgG
Clonality:	Polyclonal
Immunogen:	Synthetic peptide corresponding to a region within amino acids 300 and 392 of VPS11 (Uniprot ID#Q9H270)
Formulation:	0.1M Tris, 0.1M Glycine, 10% Glycerol (pH7). 0.01% Thimerosal was added as a preservative.
Concentration:	lot specific
Purification:	Purified by antigen-affinity chromatography.
Conjugation:	Unconjugated
Storage:	Store at -20°C as received.
Stability:	Stable for 12 months from date of receipt.
Predicted Protein Size:	108 kDa
Gene Name:	VPS11, CORVET/HOPS core subunit
Database Link:	NP_068375 Entrez Gene 71732 MouseEntrez Gene 315600 RatEntrez Gene 55823 Human Q9H270
Background:	Vesicle mediated protein sorting plays an important role in segregation of intracellular molecules into distinct organelles. Genetic studies in yeast have identified more than 40 vacuolar protein sorting (VPS) genes involved in vesicle transport to vacuoles. This gene encodes the human homolog of yeast class C Vps11 protein. The mammalian class C Vps proteins are predominantly associated with late endosomes/lysosomes, and like their yeast counterparts, may mediate vesicle trafficking steps in the endosome/lysosome pathway. [provided by RefSeq]
Synonyms:	END1; hVPS11; PEP5; RNF108

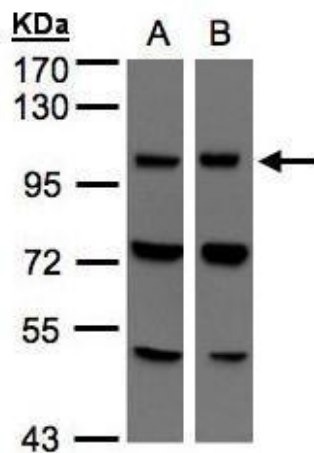


[View online »](#)

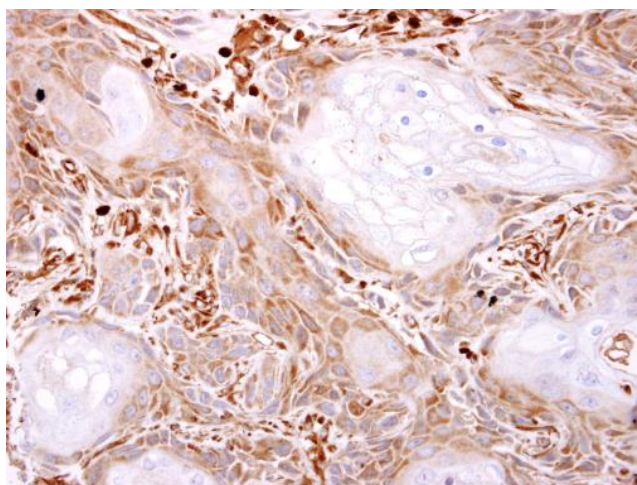
Note: Seq homology of immunogen across species: Mouse (100%), Rat (100%), Zebrafish (85%), Japanese Medaka (100%), Xenopus Tropicalis (92%), Bovine (100%)

Protein Families: Druggable Genome

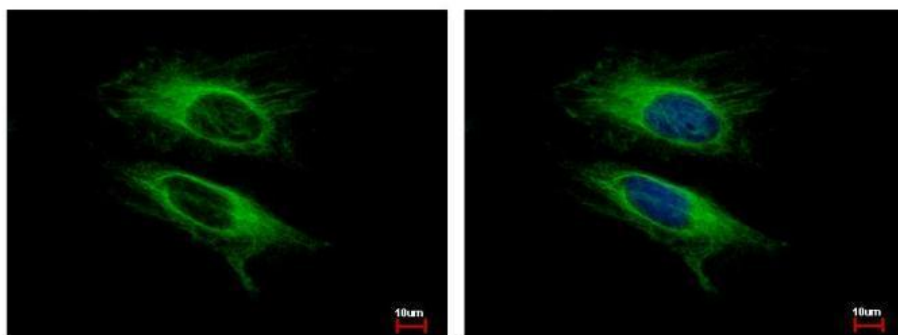
Product images:



Sample (30 ug of whole cell lysate). A:293T. B:Hep G2. 7.5% SDS PAGE. TA308196 diluted at 1:500



VPS11 antibody detects VPS11 protein at cytosol on Ca922 xenograft by immunohistochemical analysis. Sample: Paraffin-embedded Ca922 xenograft. VPS11 antibody (TA308196) dilution: 1:500.



VPS11 antibody detects VPS11 protein at cytoplasm by immunofluorescent analysis. Sample: HeLa cells were fixed in -20°C 100% MeOH for 5 min. Green: VPS11 protein stained by VPS11 antibody (TA308196) diluted at 1:500. Blue: Hoechst 33343 staining.