

Product datasheet for **TA308195**

VPS37C Rabbit Polyclonal Antibody

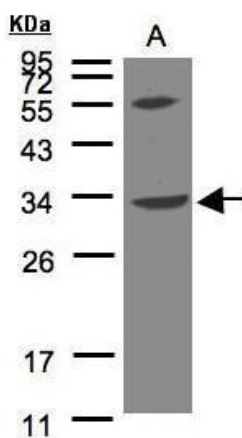
Product data:

Product Type:	Primary Antibodies
Applications:	IF, WB
Recommended Dilution:	ICC/IF:1:100-1:1000; WB:1:500-1:3000
Reactivity:	Human (Predicted: Mouse, Rat, Bovine)
Host:	Rabbit
Isotype:	IgG
Clonality:	Polyclonal
Immunogen:	Synthetic peptide corresponding to a region within amino acids 1 and 46 of VPS37C (Uniprot ID#A5D8V6)
Formulation:	0.1M Tris, 0.1M Glycine, 10% Glycerol (pH7). 0.01% Thimerosal was added as a preservative.
Concentration:	lot specific
Purification:	Purified by antigen-affinity chromatography.
Conjugation:	Unconjugated
Storage:	Store at -20°C as received.
Stability:	Stable for 12 months from date of receipt.
Predicted Protein Size:	39 kDa
Gene Name:	VPS37C, ESCRT-I subunit
Database Link:	NP_060436 Entrez Gene 107305 Mouse Entrez Gene 308178 Rat Entrez Gene 55048 Human A5D8V6
Background:	VPS37C is a subunit of ESCRT-I (endosomal sorting complex required for transport I), a complex in the class E vacuolar protein sorting (VPS) pathway required for sorting ubiquitinated transmembrane proteins into internal vesicles of multivesicular bodies (Eastman et al., 2005 [PubMed 15509564]). [supplied by OMIM]
Synonyms:	FLJ20847
Note:	Seq homology of immunogen across species: Mouse (87%), Rat (87%), Bovine (87%)
Protein Pathways:	Endocytosis

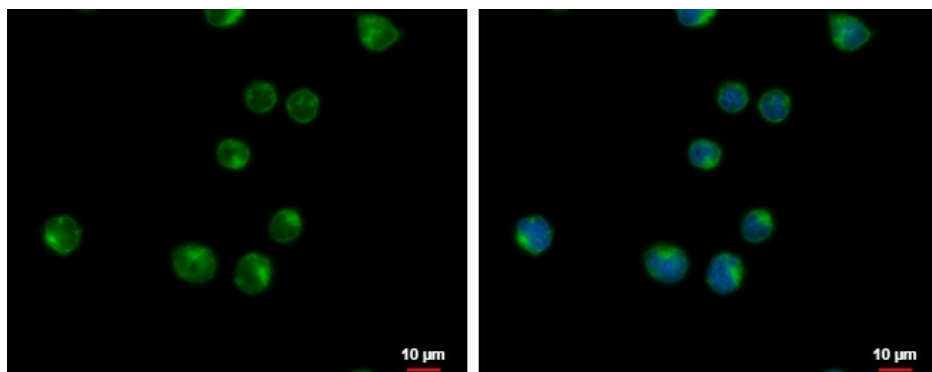


[View online »](#)

Product images:



Sample (30 ug of whole cell lysate). A:Raji. 12% SDS PAGE. TA308195 diluted at 1:500



VPS37C antibody [N1], N-term detects VPS37C protein at cytoplasm by immunofluorescent analysis. Sample: Raji cells were fixed in 4% paraformaldehyde at RT for 15 min. Green: VPS37C protein stained by VPS37C antibody [N1], N-term (TA308195) diluted at 1:50