

Product datasheet for **TA308194**

HS1BP3 Rabbit Polyclonal Antibody

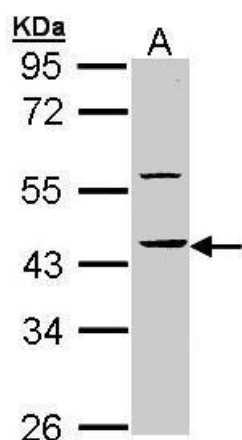
Product data:

| | |
|-------------------------|--|
| Product Type: | Primary Antibodies |
| Applications: | IHC, WB |
| Recommended Dilution: | IHC:1:100-1:1000; WB:1:5000-1:20000 |
| Reactivity: | Human (Predicted: Mouse, Bovine) |
| Host: | Rabbit |
| Isotype: | IgG |
| Clonality: | Polyclonal |
| Immunogen: | Synthetic peptide corresponding to a region within amino acids 320 and 392 of HS1BP3 (Uniprot ID#Q53T59) |
| Formulation: | 0.1M Tris, 0.1M Glycine, 10% Glycerol (pH7). 0.01% Thimerosal was added as a preservative. |
| Concentration: | lot specific |
| Purification: | Purified by antigen-affinity chromatography. |
| Conjugation: | Unconjugated |
| Storage: | Store at -20°C as received. |
| Stability: | Stable for 12 months from date of receipt. |
| Predicted Protein Size: | 43 kDa |
| Gene Name: | HCLS1 binding protein 3 |
| Database Link: | NP_071905 Entrez Gene 58240 Mouse Entrez Gene 64342 Human Q53T59 |
| Background: | The protein encoded by this gene shares similarity with mouse Hs1bp3, an Hcls1/Hs1-interacting protein that may be involved in lymphocyte activation. [provided by RefSeq] |
| Synonyms: | ETM2; HS1-BP3 |
| Note: | Seq homology of immunogen across species: Mouse (92%), Bovine (92%) |

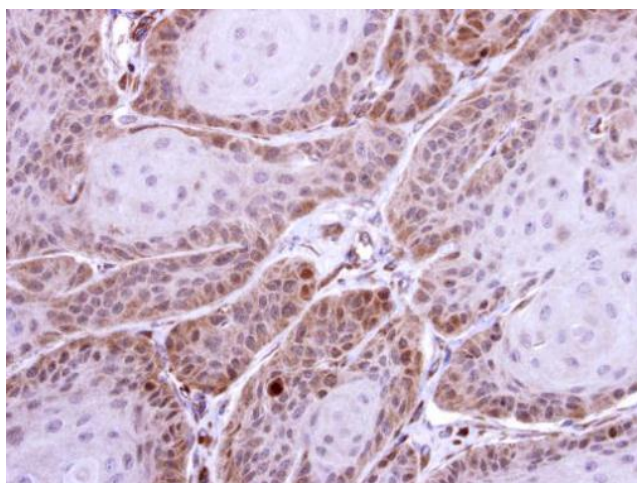


[View online »](#)

Product images:



Sample (30 ug of whole cell lysate). A: Molt-4. 10% SDS PAGE. TA308194 diluted at 1:10000.



Immunohistochemical analysis of paraffin-embedded Cal27 xenograft, using HS1BP3 (TA308194) antibody at 1:500 dilution.