

Product datasheet for **TA308193**

DPP8 Rabbit Polyclonal Antibody

Product data:

Product Type:	Primary Antibodies
Applications:	IF, WB
Recommended Dilution:	ICC/IF:1:100-1:1000; WB:1:500-1:3000
Reactivity:	Human (Predicted: Mouse, Rat, Bovine)
Host:	Rabbit
Isotype:	IgG
Clonality:	Polyclonal
Immunogen:	Synthetic peptide corresponding to a region within amino acids 1 and 85 of DPP8 (Uniprot ID#Q6V1X1)
Formulation:	0.1M Tris, 0.1M Glycine, 10% Glycerol (pH7). 0.01% Thimerosal was added as a preservative.
Concentration:	lot specific
Purification:	Purified by antigen-affinity chromatography.
Conjugation:	Unconjugated
Storage:	Store at -20°C as received.
Stability:	Stable for 12 months from date of receipt.
Predicted Protein Size:	90 kDa
Gene Name:	dipeptidyl peptidase 8
Database Link:	NP_932064 Entrez Gene 74388 Mouse Entrez Gene 315758 Rat Entrez Gene 54878 Human Q6V1X1
Background:	This gene encodes a member of the peptidase S9B family, a small family of dipeptidyl peptidases that are able to cleave peptide substrates at a prolyl bond. The encoded protein shares similarity with dipeptidyl peptidase IV in that it is ubiquitously expressed, and hydrolyzes the same substrates. These similarities suggest that, like dipeptidyl peptidase IV, this protein may play a role in T-cell activation and immune function. Alternatively spliced transcript variants encoding different isoforms have been described. [provided by RefSeq]
Synonyms:	DP8; DPRP1; MSTP141

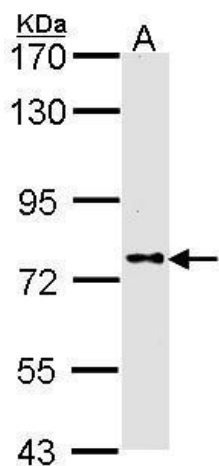


[View online »](#)

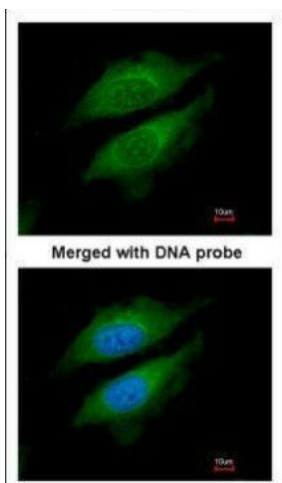
Note: Seq homology of immunogen across species: Mouse (100%), Rat (100%), Bovine (100%)

Protein Families: Druggable Genome, Protease, Transmembrane

Product images:



Sample (30 ug of whole cell lysate). A: A431 . 7.5% SDS PAGE. DPP8 antibody. TA308193 diluted at 1:1000.



Immunofluorescence analysis of paraformaldehyde-fixed HeLa, using DPRP1 (TA308193) antibody at 1:200 dilution.