

Product datasheet for **TA308190**

GGT1 Rabbit Polyclonal Antibody

Product data:

Product Type:	Primary Antibodies
Applications:	IHC, WB
Recommended Dilution:	IHC:1:100-1:1000; WB:1:500-1:3000
Reactivity:	Human, Mouse
Host:	Rabbit
Isotype:	IgG
Clonality:	Polyclonal
Immunogen:	Recombinant fragment corresponding to a region within amino acids 1 and 226 of GGT1 (Uniprot ID#P19440)
Formulation:	1XPBS, 20% Glycerol (pH7). 0.025% ProClin 300 was added as a preservative.
Concentration:	lot specific
Purification:	Purified by antigen-affinity chromatography.
Conjugation:	Unconjugated
Storage:	Store at -20°C as received.
Stability:	Stable for 12 months from date of receipt.
Predicted Protein Size:	61 kDa
Gene Name:	gamma-glutamyltransferase 1
Database Link:	NP_001027537 Entrez Gene 14598 Mouse Entrez Gene 2678 Human P19440

Background: The enzyme encoded by this gene catalyzes the transfer of the glutamyl moiety of glutathione to a variety of amino acids and dipeptide acceptors. The enzyme is composed of a heavy chain and a light chain, which are derived from a single precursor protein, and is present in tissues involved in absorption and secretion. This enzyme is a member of the gamma-glutamyltransferase protein family, of which many members have not yet been fully characterized and some of which may represent pseudogenes. This gene is classified as type I gamma-glutamyltransferase. Multiple alternatively spliced variants, encoding the same protein, have been identified. [provided by RefSeq]



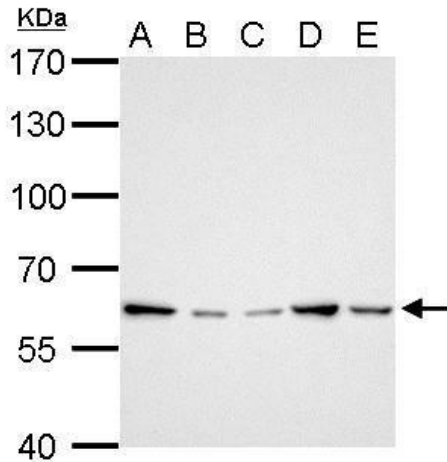
[View online »](#)

Synonyms: CD224; D22S672; D22S732; GGT; GGT 1; GTG

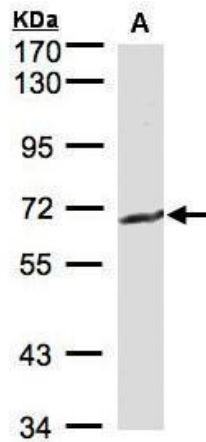
Protein Families: Protease, Transmembrane

Protein Pathways: Arachidonic acid metabolism, Cyanoamino acid metabolism, Glutathione metabolism, Metabolic pathways, Selenoamino acid metabolism, Taurine and hypotaurine metabolism

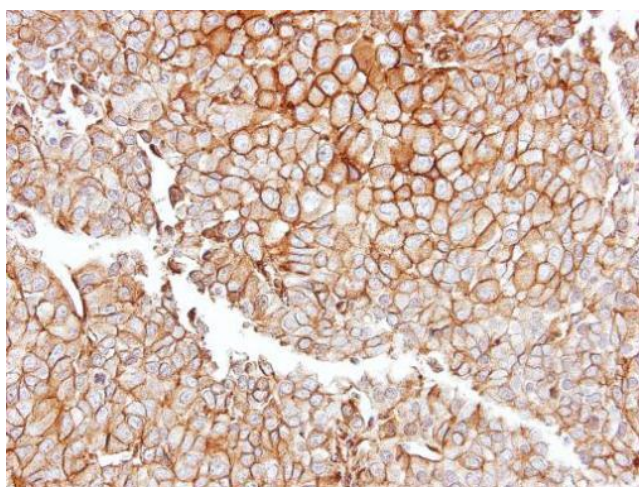
Product images:



GGT1 antibody detects GGT1 protein by Western blot analysis. A. 30 ug Neuro2A whole cell lysate/extract. B. 30 ug GL261 whole cell lysate/extract. C. 30 ug C8D30 whole cell lysate/extract. D. 30 ug NIH-3T3 whole cell lysate/extract. E. 30 ug Raw264.7 whol



Sample (30 ug of whole cell lysate). A: MOLT4. 7.5% SDS PAGE. TA308190 diluted at 1:500



Immunohistochemical analysis of paraffin-embedded PC13 xenograft, using GGT1 (TA308190) antibody at 1:100 dilution.