

## Product datasheet for **TA308189**

### RALB Rabbit Polyclonal Antibody

#### Product data:

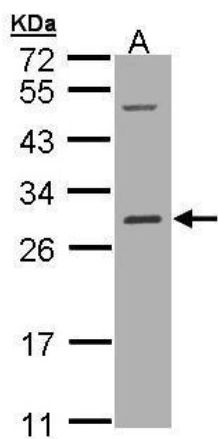
Product Type:	Primary Antibodies
Applications:	WB
Recommended Dilution:	WB:1:500-1:3000
Reactivity:	Human (Predicted: Rhesus Monkey)
Host:	Rabbit
Isotype:	IgG
Clonality:	Polyclonal
Immunogen:	Recombinant fragment corresponding to a region within amino acids 1 and 206 of RALB (Uniprot ID#P11234)
Formulation:	0.1M Tris, 0.1M Glycine, 10% Glycerol (pH7). 0.01% Thimerosal was added as a preservative.
Concentration:	lot specific
Purification:	Purified by antigen-affinity chromatography.
Conjugation:	Unconjugated
Storage:	Store at -20°C as received.
Stability:	Stable for 12 months from date of receipt.
Predicted Protein Size:	23 kDa
Gene Name:	RALB Ras like proto-oncogene B
Database Link:	<a href="#">NP_002872</a> <a href="#">Entrez Gene 5899 Human P11234</a>
Background:	This gene encodes a GTP-binding protein that belongs to the small GTPase superfamily and Ras family of proteins. GTP-binding proteins mediate the transmembrane signaling initiated by the occupancy of certain cell surface receptors. [provided by RefSeq]
Synonyms:	GTP binding protein; GTP binding protein); RAS-like protein B; v-ral simian leukemia viral oncogene homolog B; v-ral simian leukemia viral oncogene homolog B (ras related
Note:	Seq homology of immunogen across species: Rhesus Monkey (100%)
Protein Families:	Druggable Genome



[View online »](#)

Protein Pathways: Pancreatic cancer, Pathways in cancer

### Product images:



Sample (30 ug of whole cell lysate). A: Hep G2.  
12% SDS PAGE. TA308189 diluted at 1:1000