

Product datasheet for **TA308185**

Phosphoserine phosphatase (PSPH) Rabbit Polyclonal Antibody

Product data:

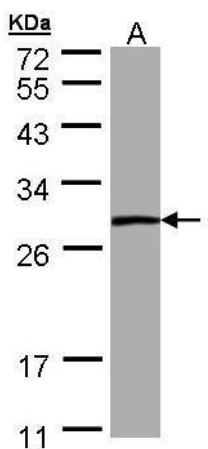
Product Type:	Primary Antibodies
Applications:	IF, WB
Recommended Dilution:	ICC/IF:1:100-1:1000; WB:1:500-1:3000
Reactivity:	Human (Predicted: Mouse, Pig, Rat, Bovine)
Host:	Rabbit
Isotype:	IgG
Clonality:	Polyclonal
Immunogen:	Recombinant fragment contain a sequence corresponding to a region within amino acids 1 and 175 of PSPH (Uniprot ID#P78330)
Formulation:	0.1M Tris, 0.1M Glycine, 10% Glycerol (pH7). 0.01% Thimerosal was added as a preservative.
Purification:	Purified by antigen-affinity chromatography.
Conjugation:	Unconjugated
Storage:	Store at -20°C as received.
Stability:	Stable for 12 months from date of receipt.
Predicted Protein Size:	25 kDa
Gene Name:	phosphoserine phosphatase
Database Link:	NP_004568 Entrez Gene 100678 Mouse Entrez Gene 304429 Rat Entrez Gene 5723 Human P78330
Background:	The protein encoded by this gene belongs to a subfamily of the phosphotransferases. This encoded enzyme is responsible for the third and last step in L-serine formation. It catalyzes magnesium-dependent hydrolysis of L-phosphoserine and is also involved in an exchange reaction between L-serine and L-phosphoserine. Deficiency of this protein is thought to be linked to Williams syndrome. [provided by RefSeq]
Synonyms:	PSP; PSPHD
Note:	Seq homology of immunogen across species: Mouse (93%), Pig (96%), Rat (94%), Bovine (94%)
Protein Families:	Druggable Genome, Phosphatase



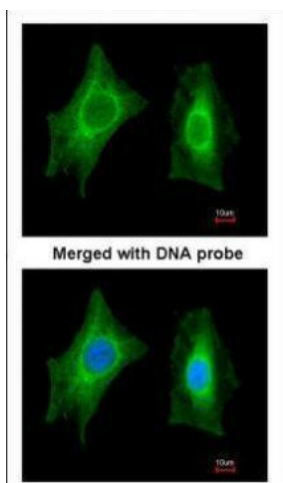
[View online »](#)

Protein Pathways: Glycine, serine and threonine metabolism, Metabolic pathways

Product images:



Sample (30 ug of whole cell lysate). A: A431. 12% SDS PAGE. TA308185 diluted at 1:1000



Immunofluorescence analysis of paraformaldehyde-fixed HeLa, using PSPH (TA308185) antibody at 1:200 dilution.