

Product datasheet for **TA308184**

CASQ2 Rabbit Polyclonal Antibody

Product data:

Product Type:	Primary Antibodies
Applications:	IHC, WB
Recommended Dilution:	IHC:1:100-1:1000; WB:1:500-1:3000
Reactivity:	Human (Predicted: Cow, Rabbit, Rat)
Host:	Rabbit
Isotype:	IgG
Clonality:	Polyclonal
Immunogen:	Recombinant fragment contain a sequence corresponding to a region within amino acids 124 and 388 of Calsequestrin 2 (Uniprot ID#O14958)
Formulation:	0.1M Tris, 0.1M Glycine, 10% Glycerol (pH7). 0.01% Thimerosal was added as a preservative.
Concentration:	lot specific
Purification:	Purified by antigen-affinity chromatography.
Conjugation:	Unconjugated
Storage:	Store at -20°C as received.
Stability:	Stable for 12 months from date of receipt.
Predicted Protein Size:	46 kDa
Gene Name:	calsequestrin 2
Database Link:	NP_001223 Entrez Gene 29209 Rat Entrez Gene 845 Human O14958
Background:	The protein encoded by this gene specifies the cardiac muscle family member of the calsequestrin family. Calsequestrin is localized to the sarcoplasmic reticulum in cardiac and slow skeletal muscle cells. The protein is a calcium binding protein that stores calcium for muscle function. Mutations in this gene cause stress-induced polymorphic ventricular tachycardia, also referred to as catecholaminergic polymorphic ventricular tachycardia 2 (CPVT2), a disease characterized by bidirectional ventricular tachycardia that may lead to cardiac arrest. [provided by RefSeq]
Synonyms:	PDIB2

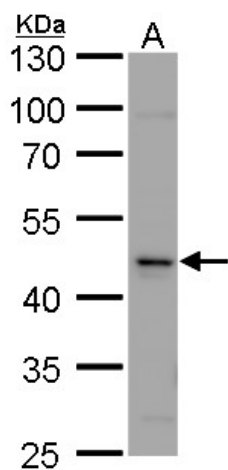


[View online »](#)

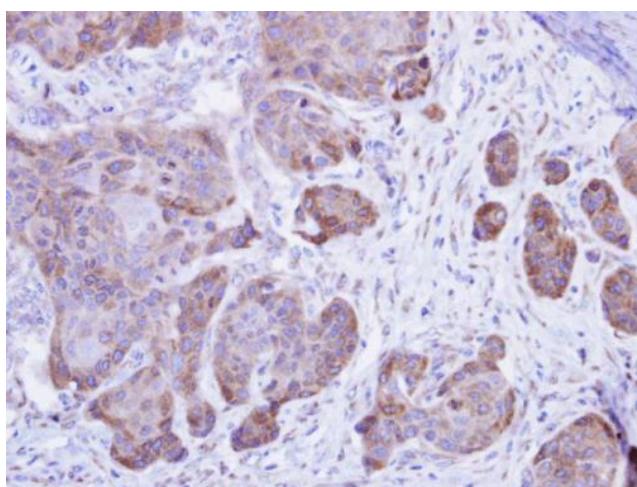
Note: Seq homology of immunogen across species: Rat (96%), Rabbit (96%), cow (95%)

Protein Families: Druggable Genome

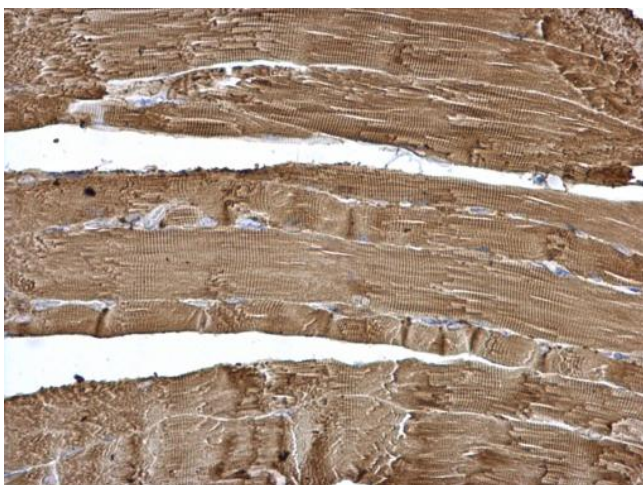
Product images:



Calsequestrin 2 antibody detects Calsequestrin 2 protein by western blot analysis. A. 30 ug HCT116 whole cell lysate/extract. 10 % SDS-PAGE. Calsequestrin 2 antibody (TA308184) dilution: 1:1000



Immunohistochemical analysis of paraffin-embedded Cal27 xenograft, using Calsequestrin-2 (TA308184) antibody at 1:500 dilution.



Calsequestrin-2 antibody detects Calsequestrin-2 protein at cytosol on mouse muscle by immunohistochemical analysis. Sample: Paraffin-embedded mouse muscle. Calsequestrin-2 antibody (TA308184) dilution: 1:500.