

Product datasheet for **TA308183**

SCY1 like 3 (SCYL3) Rabbit Polyclonal Antibody

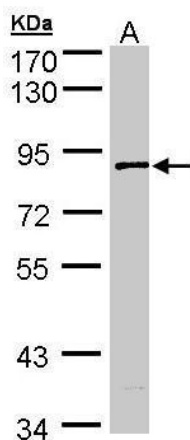
Product data:

Product Type:	Primary Antibodies
Applications:	IF, IHC, WB
Recommended Dilution:	ICC/IF:1:100-1:1000; IHC:1:100-1:1000; WB:1:500-1:3000
Reactivity:	Human
Host:	Rabbit
Isotype:	IgG
Clonality:	Polyclonal
Immunogen:	Recombinant fragment contain a sequence corresponding to a region within amino acids 80 and 549 of SCY1 like 3 (Uniprot ID#Q8IZE3)
Formulation:	0.1M Tris, 0.1M Glycine, 10% Glycerol (pH7). 0.01% Thimerosal was added as a preservative.
Concentration:	lot specific
Purification:	Purified by antigen-affinity chromatography.
Conjugation:	Unconjugated
Storage:	Store at -20°C as received.
Stability:	Stable for 12 months from date of receipt.
Predicted Protein Size:	77 kDa
Gene Name:	SCY1 like pseudokinase 3
Database Link:	NP_851607 Entrez Gene 57147 Human Q8IZE3
Synonyms:	PACE-1; PACE1
Protein Families:	Druggable Genome, Protein Kinase

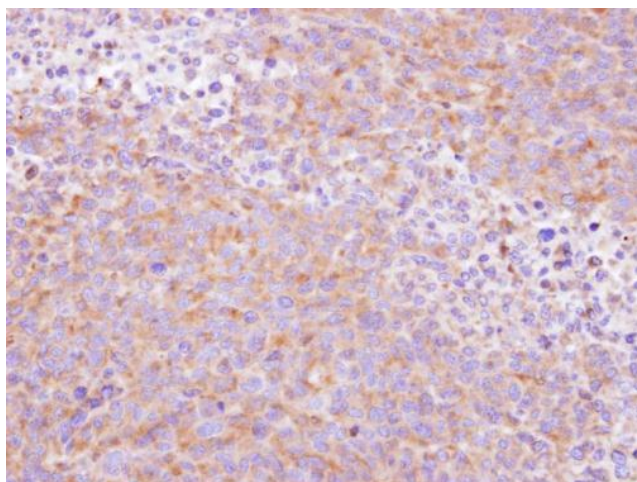


[View online »](#)

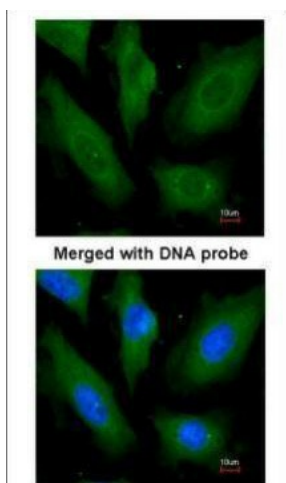
Product images:



Sample (30 ug of whole cell lysate). A: A431. 7.5% SDS PAGE. TA308183 diluted at 1:1000



Immunohistochemical analysis of paraffin-embedded H1299 xenograft, using SCY1 like 3 (TA308183) antibody at 1:500 dilution.



Immunofluorescence analysis of paraformaldehyde-fixed HeLa, using SCY1 like 3 (TA308183) antibody at 1:200 dilution.