

## Product datasheet for **TA308182**

### Syntrophin (SNTB2) Rabbit Polyclonal Antibody

#### Product data:

|                         |  |
|-------------------------|--|
| Product Type:           | Primary Antibodies   |
| Applications:           | IF, IHC, WB  |
| Recommended Dilution:   | ICC/IF:1:100-1:1000; IHC:1:100-1:1000; WB:1:500-1:3000   |
| Reactivity:             | Human (Predicted: Mouse, Rat, Bovine)  |
| Host:                   | Rabbit   |
| Isotype:                | IgG  |
| Clonality:              | Polyclonal   |
| Immunogen:              | Recombinant fragment corresponding to a region within amino acids 174 and 540 of SNTB2 (Uniprot ID#Q13425)   |
| Formulation:            | 0.1M Tris, 0.1M Glycine, 10% Glycerol (pH7). 0.01% Thimerosal was added as a preservative.   |
| Concentration:          | lot specific   |
| Purification:           | Purified by antigen-affinity chromatography.   |
| Conjugation:            | Unconjugated   |
| Storage:                | Store at -20°C as received.  |
| Stability:              | Stable for 12 months from date of receipt.   |
| Predicted Protein Size: | 58 kDa   |
| Gene Name:              | syntrophin beta 2  |
| Database Link:          | <a href="#">NP_006741</a><br><a href="#">Entrez Gene 20650 MouseEntrez Gene 689421 RatEntrez Gene 6645 Human Q13425</a>  |
| Background:             | Dystrophin is a large, rod-like cytoskeletal protein found at the inner surface of muscle fibers. Dystrophin is missing in Duchenne Muscular Dystrophy patients and is present in reduced amounts in Becker Muscular Dystrophy patients. The protein encoded by this gene is a peripheral membrane protein found associated with dystrophin and dystrophin-related proteins. This gene is a member of the syntrophin gene family, which contains at least two other structurally-related genes. [provided by RefSeq] |
| Synonyms:               | D16S2531E; EST25263; SNT2B2; SNT3; SNTL  |

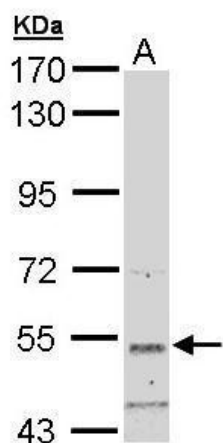


[View online »](#)

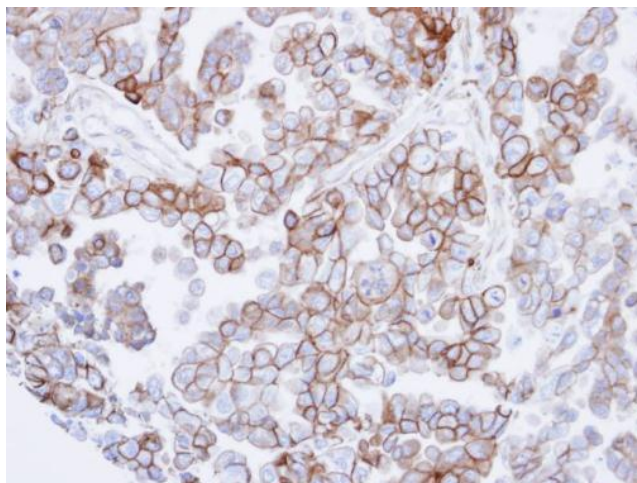
Note: Seq homology of immunogen across species: Mouse (96%), Rat (96%), Bovine (98%)

Protein Families: Secreted Protein

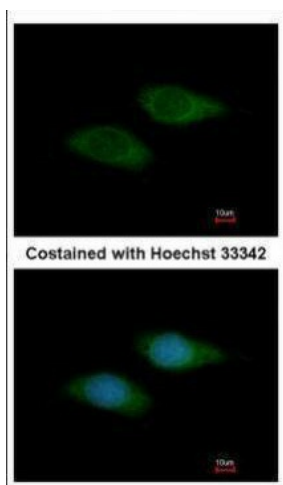
### Product images:



Sample (30 ug of whole cell lysate). A: Hep G2. 7.5% SDS PAGE. TA308182 diluted at 1:3000.



Immunohistochemical analysis of paraffin-embedded OVCAR3 xenograft, using SNTB2 (TA308182) antibody at 1:500 dilution.



Immunofluorescence analysis of methanol-fixed HeLa, using SNTB2 (TA308182) antibody at 1:200 dilution.