

Product datasheet for **TA308176**

ALAS2 Rabbit Polyclonal Antibody

Product data:

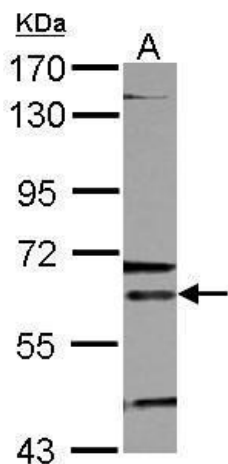
Product Type:	Primary Antibodies
Applications:	WB
Recommended Dilution:	WB:1:500-1:3000
Reactivity:	Human, Mouse (Predicted: Rat, Xenopus, Zebrafish, Bovine, X. tropicalis)
Host:	Rabbit
Isotype:	IgG
Clonality:	Polyclonal
Immunogen:	Recombinant fragment corresponding to a region within amino acids 211 and 587 of ALAS-E (Uniprot ID#P22557)
Formulation:	0.1M Tris, 0.1M Glycine, 10% Glycerol (pH7). 0.01% Thimerosal was added as a preservative.
Purification:	Purified by antigen-affinity chromatography.
Conjugation:	Unconjugated
Storage:	Store at -20°C as received.
Stability:	Stable for 12 months from date of receipt.
Predicted Protein Size:	65 kDa
Gene Name:	5'-aminolevulinate synthase 2
Database Link:	NP_000023 Entrez Gene 11656 Mouse Entrez Gene 25748 Rat Entrez Gene 212 Human P22557
Background:	The product of this gene specifies an erythroid-specific mitochondrially located enzyme. The encoded protein catalyzes the first step in the heme biosynthetic pathway. Defects in this gene cause X-linked pyridoxine-responsive sideroblastic anemia. Alternatively spliced transcript variants encoding different isoforms have been identified. [provided by RefSeq]
Synonyms:	ALAS-E; ALASE; ANH1; ASB; SIDBA1; XLDPP; XLEPP; XLSA
Note:	Seq homology of immunogen across species: Rat (95%), Xenopus laevis (81%), Zebrafish (80%), Bovine (95%), Xenopus tropicalis (81%)
Protein Families:	Druggable Genome



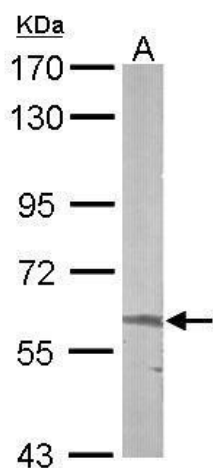
[View online »](#)

Protein Pathways: Glycine, serine and threonine metabolism, Metabolic pathways, Porphyrin and chlorophyll metabolism

Product images:



Sample (30 ug of whole cell lysate). A: K562. 7.5% SDS PAGE. TA308176 diluted at 1:500.



Sample (50 ug of whole cell lysate). A: mouse liver. 7.5% SDS PAGE. TA308176 diluted at 1:1000.