

Product datasheet for **TA308174**

KCC4 (SLC12A7) Rabbit Polyclonal Antibody

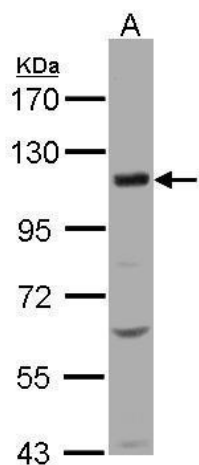
Product data:

Product Type:	Primary Antibodies
Applications:	WB
Recommended Dilution:	WB:1:500-1:3000
Reactivity:	Human (Predicted: Mouse, Rabbit, Rat)
Host:	Rabbit
Isotype:	IgG
Clonality:	Polyclonal
Immunogen:	Recombinant fragment corresponding to a region within amino acids 845 and 1083 of KCC4 (Uniprot ID#Q9Y666)
Formulation:	0.1M Tris, 0.1M Glycine, 10% Glycerol (pH7). 0.01% Thimerosal was added as a preservative.
Concentration:	lot specific
Purification:	Affinity purified by Protein A.
Conjugation:	Unconjugated
Storage:	Store at -20°C as received.
Stability:	Stable for 12 months from date of receipt.
Predicted Protein Size:	119 kDa
Gene Name:	solute carrier family 12 member 7
Database Link:	NP_006589 Entrez Gene 20499 Mouse Entrez Gene 308069 Rat Entrez Gene 10723 Human Q9Y666
Synonyms:	KCC4
Note:	Seq homology of immunogen across species: Mouse (92%), Rabbit (86%), Rat (91%)
Protein Families:	Transmembrane



[View online »](#)

Product images:



Sample (30 ug of whole cell lysate). A:H1299.
7.5% SDS PAGE. TA308174 diluted at 1:500