

## Product datasheet for **TA308172**

### Pancreatic alpha amylase (AMY2A) Rabbit Polyclonal Antibody

#### Product data:

Product Type:	Primary Antibodies
Applications:	IHC, WB
Recommended Dilution:	IHC:1:100-1:1000; WB:1:500-1:3000
Reactivity:	Human (Predicted: Bovine)
Host:	Rabbit
Isotype:	IgG
Clonality:	Polyclonal
Immunogen:	Recombinant fragment corresponding to a region within amino acids 156 and 430 of alpha amylase 2A (pancreatic) (Uniprot ID#P04746)
Formulation:	0.1M Tris, 0.1M Glycine, 10% Glycerol (pH7). 0.01% Thimerosal was added as a preservative.
Concentration:	lot specific
Purification:	Purified by antigen-affinity chromatography.
Conjugation:	Unconjugated
Storage:	Store at -20°C as received.
Stability:	Stable for 12 months from date of receipt.
Predicted Protein Size:	58 kDa
Gene Name:	amylase, alpha 2A (pancreatic)
Database Link:	<a href="#">NP_000690</a> <a href="#">Entrez Gene 279 Human P04746</a>
Background:	Amylases are secreted proteins that hydrolyze 1,4-alpha-glucoside bonds in oligosaccharides and polysaccharides, and thus catalyze the first step in digestion of dietary starch and glycogen. The human genome has a cluster of several amylase genes that are expressed at high levels in either salivary gland or pancreas. This gene encodes an amylase isoenzyme produced by the pancreas. [provided by RefSeq]
Synonyms:	AMY2; PA
Note:	Seq homology of immunogen across species: Bovine (89%)

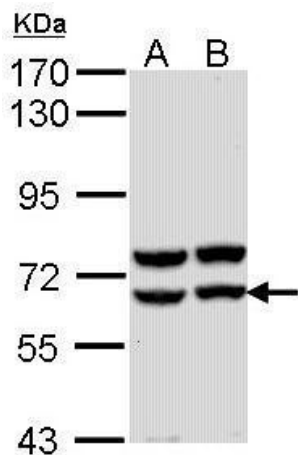


[View online »](#)

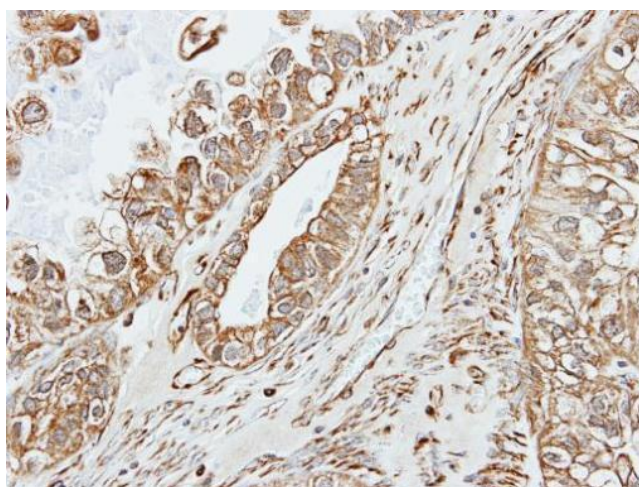
**Protein Families:** Secreted Protein

**Protein Pathways:** Metabolic pathways, Starch and sucrose metabolism

**Product images:**



Sample (30 ug of whole cell lysate). A: Molt-4. B: Raji. 7.5% SDS PAGE. TA308172 diluted at 1:1000.



Immunohistochemical analysis of paraffin-embedded OVCA, using alpha amylase 2A (pancreatic) (TA308172) antibody at 1:500 dilution.