

## Product datasheet for **TA308171**

### ASS1 Rabbit Polyclonal Antibody

#### Product data:

Product Type:	Primary Antibodies
Applications:	IHC, WB
Recommended Dilution:	IHC:1:100-1:1000; WB:1:500-1:3000
Reactivity:	Human
Host:	Rabbit
Isotype:	IgG
Clonality:	Polyclonal
Immunogen:	Recombinant fragment corresponding to a region within amino acids 1 and 198 of ASS1 (Uniprot ID#P00966)
Formulation:	0.1M Tris, 0.1M Glycine, 10% Glycerol (pH7). 0.01% Thimerosal was added as a preservative.
Concentration:	lot specific
Purification:	Purified by antigen-affinity chromatography.
Conjugation:	Unconjugated
Storage:	Store at -20°C as received.
Stability:	Stable for 12 months from date of receipt.
Predicted Protein Size:	47 kDa
Gene Name:	argininosuccinate synthase 1
Database Link:	<a href="#">NP_000041</a> <a href="#">Entrez Gene 445 Human</a> <a href="#">P00966</a>
Background:	The protein encoded by this gene catalyzes the penultimate step of the arginine biosynthetic pathway. There are approximately 10 to 14 copies of this gene including the pseudogenes scattered across the human genome, among which the one located on chromosome 9 appears to be the only functional gene for argininosuccinate synthetase. Mutations in the chromosome 9 copy of ASS cause citrullinemia. Two transcript variants encoding the same protein have been found for this gene. [provided by RefSeq]
Synonyms:	ASS; CTLN1

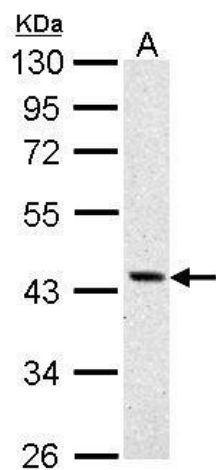


[View online »](#)

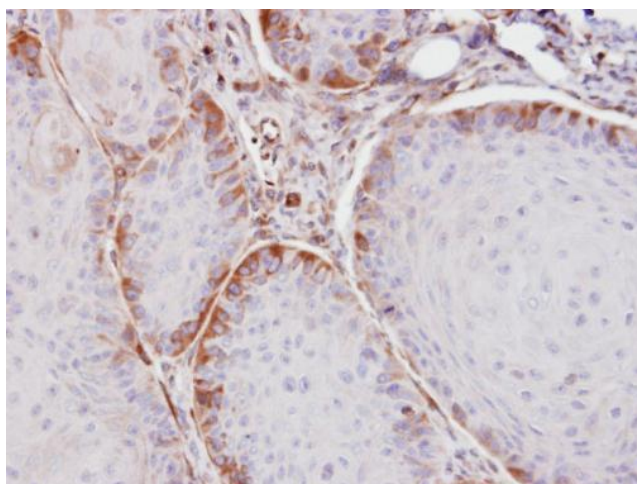
Protein Families: Druggable Genome

Protein Pathways: Alanine, aspartate and glutamate metabolism, Arginine and proline metabolism, Metabolic pathways

### Product images:



ASS1 antibody detects ASS1 protein by Western blot analysis. A. 30 ug A431 whole cell lysate/extract. 10 % SDS-PAGE. ASS1 antibody (TA308171) dilution: 1:1000



Immunohistochemical analysis of paraffin-embedded Cal27 xenograft, using ASS1 (TA308171) antibody at 1:100 dilution.