

Product datasheet for **TA308169**

RAPGEF5 Rabbit Polyclonal Antibody

Product data:

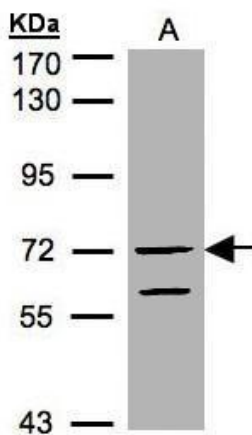
Product Type:	Primary Antibodies
Applications:	WB
Recommended Dilution:	WB:1:500-1:3000
Reactivity:	Human (Predicted: Monkey)
Host:	Rabbit
Isotype:	IgG
Clonality:	Polyclonal
Immunogen:	Recombinant protein fragment contain a sequence corresponding to a region within amino acids 1 and 179 of Human RAPGEF5
Formulation:	0.1M Tris, 0.1M Glycine, 10% Glycerol (pH7). 0.01% Thimerosal was added as a preservative.
Concentration:	lot specific
Purification:	Purified by antigen-affinity chromatography.
Conjugation:	Unconjugated
Storage:	Store at -20°C as received.
Stability:	Stable for 12 months from date of receipt.
Predicted Protein Size:	85 kDa
Gene Name:	Rap guanine nucleotide exchange factor 5
Database Link:	NP_036426 Entrez Gene 711698 Monkey Entrez Gene 9771 Human Q92565
Background:	Members of the RAS (see HRAS; MIM 190020) subfamily of GTPases function in signal transduction as GTP/GDP-regulated switches that cycle between inactive GDP- and active GTP-bound states. Guanine nucleotide exchange factors (GEFs), such as RAPGEF5, serve as RAS activators by promoting acquisition of GTP to maintain the active GTP-bound state and are the key link between cell surface receptors and RAS activation (Rebhun et al., 2000 [PubMed 10934204]). [supplied by OMIM]
Synonyms:	GFR; MR-GEF; REPAC



[View online »](#)

Note: Seq homology of immunogen across species: Monkey (98%)

Product images:



Sample (30 ug of whole cell lysate). A:HeLa S3.
7.5% SDS PAGE. TA308169 diluted at 1:1000