

## Product datasheet for **TA308168**

### PABPC3 Rabbit Polyclonal Antibody

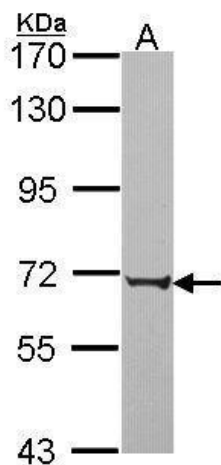
#### Product data:

Product Type:	Primary Antibodies
Applications:	IHC, WB
Recommended Dilution:	IHC:1:100-1:1000; WB:1:500-1:3000
Reactivity:	Human (Predicted: Rat)
Host:	Rabbit
Isotype:	IgG
Clonality:	Polyclonal
Immunogen:	Recombinant fragment corresponding to a region within amino acids 107 and 323 of PABPC3 (Uniprot ID#Q9H361)
Formulation:	0.1M Tris, 0.1M Glycine, 20% Glycerol (pH7). 0.01% Thimerosal was added as a preservative.
Concentration:	lot specific
Purification:	Purified by antigen-affinity chromatography.
Conjugation:	Unconjugated
Storage:	Store at -20°C as received.
Stability:	Stable for 12 months from date of receipt.
Predicted Protein Size:	70 kDa
Gene Name:	poly(A) binding protein cytoplasmic 3
Database Link:	<a href="#">NP_112241</a> <a href="#">Entrez Gene 5042 Human Q9H361</a>
Background:	Messenger RNA stability and translation initiation are extensively under the control of poly(A)-binding proteins (PABP). See PABPC1 (MIM 604679) for background information. [supplied by OMIM]
Synonyms:	PABP3; PABPL3; tPABP
Note:	Seq homology of immunogen across species: Rat (84%)

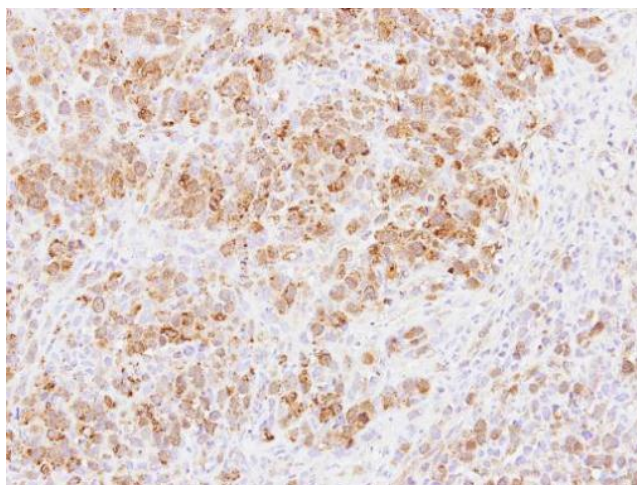


[View online »](#)

## Product images:



Sample (30 ug of whole cell lysate). A: JurKat.  
7.5% SDS PAGE. TA308168 diluted at 1:1000.



Immunohistochemical analysis of paraffin-  
embedded SCM1 xenograft, using PABPC3  
(TA308168) antibody at 1:100 dilution.