

Product datasheet for **TA308167**

SFMBT1 Rabbit Polyclonal Antibody

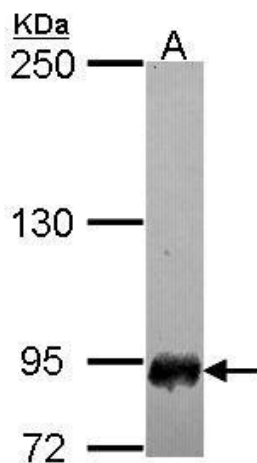
Product data:

Product Type:	Primary Antibodies
Applications:	WB
Recommended Dilution:	WB:1:500-1:3000
Reactivity:	Human (Predicted: Mouse, Rat, Bovine)
Host:	Rabbit
Isotype:	IgG
Clonality:	Polyclonal
Immunogen:	Recombinant fragment corresponding to a region within amino acids 13 and 225 of SFMBT1 (Uniprot ID#Q9UHJ3)
Formulation:	0.1M Tris, 0.1M Glycine, 20% Glycerol (pH7). 0.01% Thimerosal was added as a preservative.
Concentration:	lot specific
Purification:	Purified by antigen-affinity chromatography.
Conjugation:	Unconjugated
Storage:	Store at -20°C as received.
Stability:	Stable for 12 months from date of receipt.
Predicted Protein Size:	98 kDa
Gene Name:	Scm-like with four mbt domains 1
Database Link:	NP_001005159 Entrez Gene 54650 Mouse Entrez Gene 58967 Rat Entrez Gene 51460 Human Q9UHJ3
Background:	This gene shares high similarity with the Drosophila Scm (sex comb on midleg) gene. It encodes a protein which contains four malignant brain tumor repeat (mbt) domains and may be involved in antigen recognition. Several alternative splice variants have been characterized. [provided by RefSeq]
Synonyms:	RU1; SFMBT
Note:	Seq homology of immunogen across species: Mouse (88%), Rat (87%), Bovine (97%)
Protein Families:	Transcription Factors



[View online »](#)

Product images:



Sample (30 ug of whole cell lysate). A: IMR32.
7.5% SDS PAGE. TA308167 diluted at 1:3000.