

## Product datasheet for **TA308165**

### XYLB Rabbit Polyclonal Antibody

#### Product data:

Product Type:	Primary Antibodies
Applications:	WB
Recommended Dilution:	WB:1:500-1:3000
Reactivity:	Human
Host:	Rabbit
Isotype:	IgG
Clonality:	Polyclonal
Immunogen:	Synthetic peptide corresponding to a region within amino acids 473 and 536 of XYLB (Uniprot ID#O75191)
Formulation:	0.1M Tris, 0.1M Glycine, 10% Glycerol (pH7). 0.01% Thimerosal was added as a preservative.
Concentration:	lot specific
Purification:	Purified by antigen-affinity chromatography.
Conjugation:	Unconjugated
Storage:	Store at -20°C as received.
Stability:	Stable for 12 months from date of receipt.
Predicted Protein Size:	58 kDa
Gene Name:	xylulokinase homolog (H. influenzae)
Database Link:	<a href="#">NP_005099</a> <a href="#">Entrez Gene 9942 Human O75191</a>
Background:	The protein encoded by this gene shares 22% sequence identity with Hemophilus influenzae xylulokinase, and even higher identity to other gene products in C.elegans (45%) and yeast (31-35%), which are thought to belong to a family of enzymes that include fucokinase, gluconokinase, glycerokinase and xylulokinase. These proteins play important roles in energy metabolism. Multiple transcripts resulting from use of alternate polyadenylation sites have been noted for this gene. [provided by RefSeq]
Synonyms:	FLJ10343; FLJ12539; FLJ22075

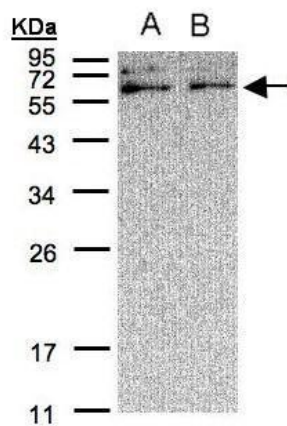


[View online »](#)

Protein Families: Druggable Genome

Protein Pathways: Metabolic pathways, Pentose and glucuronate interconversions

### Product images:



Sample (30 ug of whole cell lysate). A:A431.  
B:H1299. 12% SDS PAGE. TA308165 diluted at  
1:500