

Product datasheet for **TA308164**

BCL2L12 Rabbit Polyclonal Antibody

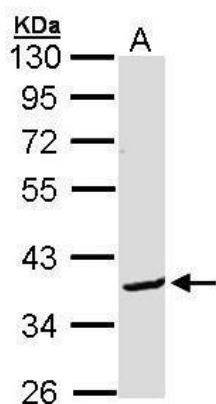
Product data:

| | |
|-------------------------|---|
| Product Type: | Primary Antibodies |
| Applications: | IHC, WB |
| Recommended Dilution: | IHC:1:100-1:1000; WB:1:500-1:3000 |
| Reactivity: | Human |
| Host: | Rabbit |
| Isotype: | IgG |
| Clonality: | Polyclonal |
| Immunogen: | Synthetic peptide corresponding to a region within amino acids 210 and 334 of BCL2L12 |
| Formulation: | 0.1M Tris, 0.1M Glycine, 10% Glycerol (pH7). 0.01% Thimerosal was added as a preservative. |
| Purification: | Purified by antigen-affinity chromatography. |
| Conjugation: | Unconjugated |
| Storage: | Store at -20°C as received. |
| Stability: | Stable for 12 months from date of receipt. |
| Predicted Protein Size: | 37 kDa |
| Gene Name: | BCL2 like 12 |
| Database Link: | NP_001035758 Entrez Gene 83596 Human Q9HB09 |
| Background: | The protein encoded by this gene belongs to the BCL-2 protein family. BCL-2 family members form hetero- or homodimers and act as anti- or pro-apoptotic regulators that are involved in a wide variety of cellular activities. This protein contains a Bcl-2 homology domain 2 (BH2). The function of this gene has not yet been determined. Two alternatively spliced transcript variants of this gene encoding distinct isoforms have been reported. [provided by RefSeq] |
| Synonyms: | MGC120313; MGC120314; MGC120315 |
| Protein Families: | Druggable Genome |

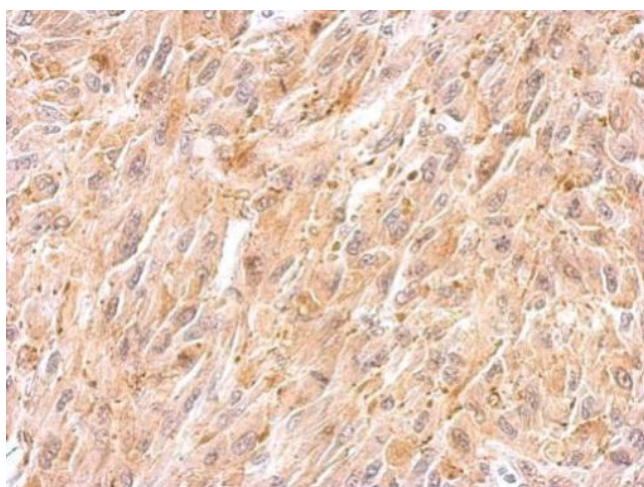


[View online »](#)

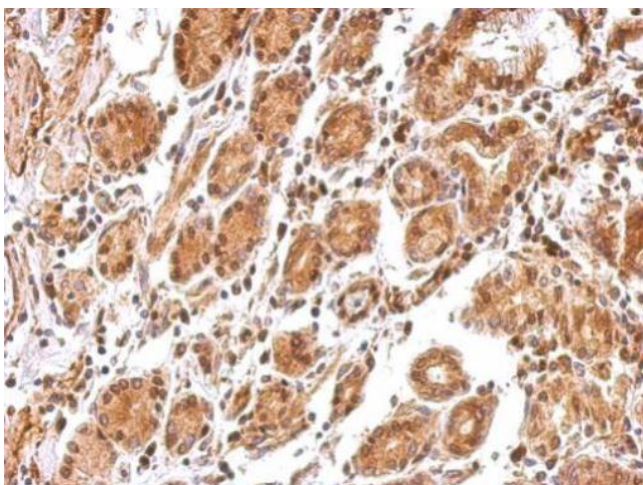
Product images:



Sample (30 ug of whole cell lysate). A: Molt-4. 10% SDS PAGE. TA308164 diluted at 1:1000.



BCL2L12 antibody detects BCL2L12 protein at cytosol on U87 xenograft by immunohistochemical analysis. Sample: Paraffin-embedded U87 xenograft. BCL2L12 antibody (TA308164) dilution: 1:500.



BCL2L12 antibody detects BCL2L12 protein at cytosol and nucleus on colon carcinoma by immunohistochemical analysis. Sample: Paraffin-embedded colon carcinoma tissue. BCL2L12 antibody (TA308164) dilution: 1:500.