

Product datasheet for **TA308163**

SHC4 Rabbit Polyclonal Antibody

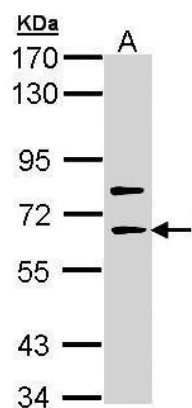
Product data:

Product Type:	Primary Antibodies
Applications:	WB
Recommended Dilution:	WB:1:500-1:3000
Reactivity:	Human (Predicted: Bovine)
Host:	Rabbit
Isotype:	IgG
Clonality:	Polyclonal
Immunogen:	Recombinant fragment corresponding to a region within amino acids 352 and 630 of SHC4 (Uniprot ID#Q6S5L8)
Formulation:	0.1M Tris, 0.1M Glycine, 10% Glycerol (pH7). 0.01% Thimerosal was added as a preservative.
Concentration:	lot specific
Purification:	Purified by antigen-affinity chromatography.
Conjugation:	Unconjugated
Storage:	Store at -20°C as received.
Stability:	Stable for 12 months from date of receipt.
Predicted Protein Size:	69 kDa
Gene Name:	SHC adaptor protein 4
Database Link:	NP_976224 Entrez Gene 399694 Human Q6S5L8
Synonyms:	RaLP; SHCD
Note:	Seq homology of immunogen across species: Bovine (87%)
Protein Pathways:	Chemokine signaling pathway, Chronic myeloid leukemia, ErbB signaling pathway, Focal adhesion, Glioma, Insulin signaling pathway, Natural killer cell mediated cytotoxicity, Neurotrophin signaling pathway



[View online »](#)

Product images:



Sample (30 ug of whole cell lysate). A: Molt-4.
7.5% SDS PAGE. TA308163 diluted at 1:1000.