

## Product datasheet for **TA308161**

### CTNNAL1 Rabbit Polyclonal Antibody

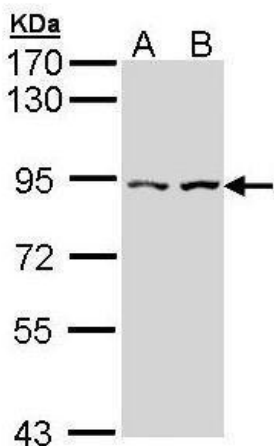
#### Product data:

Product Type:	Primary Antibodies
Applications:	IF, IHC, WB
Recommended Dilution:	ICC/IF:1:100-1:1000; IHC:1:100-1:1000; WB:1:500-1:3000
Reactivity:	Human (Predicted: Mouse, Rat, Bovine)
Host:	Rabbit
Isotype:	IgG
Clonality:	Polyclonal
Immunogen:	Recombinant fragment corresponding to a region within amino acids 292 and 563 of Alpha-catenin (Uniprot ID#Q9UBT7)
Formulation:	0.1M Tris, 0.1M Glycine, 10% Glycerol (pH7). 0.01% Thimerosal was added as a preservative.
Concentration:	lot specific
Purification:	Purified by antigen-affinity chromatography.
Conjugation:	Unconjugated
Storage:	Store at -20°C as received.
Stability:	Stable for 12 months from date of receipt.
Predicted Protein Size:	82 kDa
Gene Name:	catenin alpha like 1
Database Link:	<a href="#">NP_003789</a> <a href="#">Entrez Gene 54366 MouseEntrez Gene 298019 RatEntrez Gene 8727 Human Q9UBT7</a>
Synonyms:	ACRP; alpha-CATU; CLLP
Note:	Seq homology of immunogen across species: Mouse (89%), Rat (89%), Bovine (94%)
Protein Families:	Druggable Genome

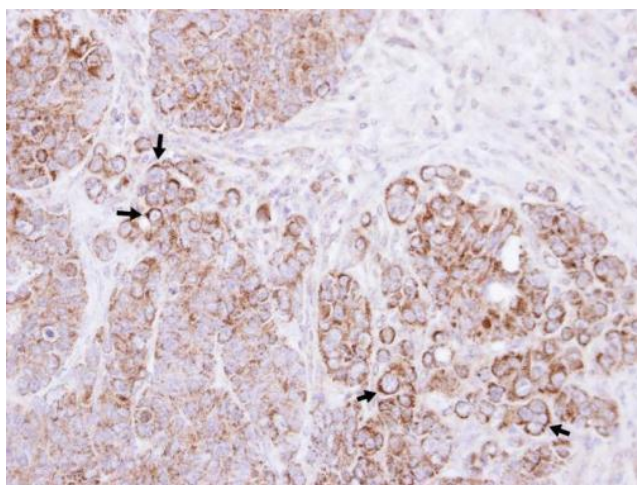


[View online »](#)

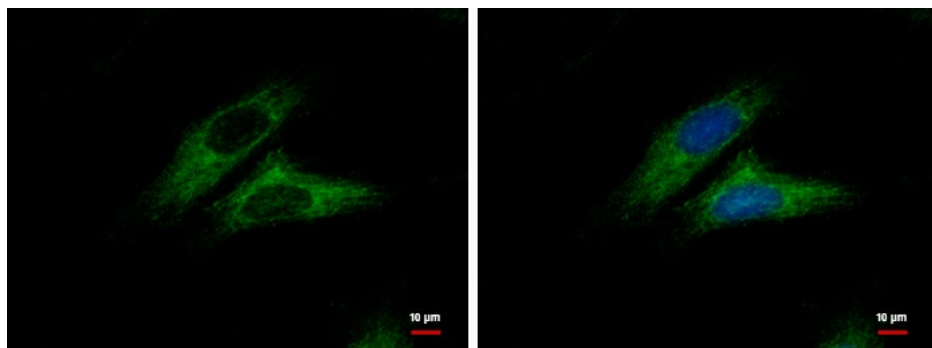
Product images:



Sample (30 ug of whole cell lysate). A: HeLa. B: Hep G2. 7.5% SDS PAGE. TA308161 diluted at 1:1000.



Immunohistochemical analysis of paraffin-embedded SW480 xenograft, using Alpha-catulin (TA308161) antibody at 1:100 dilution.



Alpha-catulin antibody [N3C2], Internal detects Alpha-catulin protein at cytoplasm by immunofluorescent analysis. Sample: HeLa cells were fixed in ice-cold MeOH for 5 min. Green: Alpha-catulin protein stained by Alpha-catulin antibody [N3C2], Internal (TA