

Product datasheet for **TA308160**

Syntaxin 5A (STX5) Rabbit Polyclonal Antibody

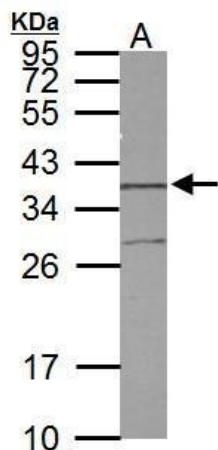
Product data:

Product Type:	Primary Antibodies
Applications:	IF, IHC, WB
Recommended Dilution:	ICC/IF:1:100-1:1000; IHC:1:100-1:1000; WB:1:1000-1:10000
Reactivity:	Human (Predicted: Rhesus Monkey)
Host:	Rabbit
Isotype:	IgG
Clonality:	Polyclonal
Immunogen:	Recombinant fragment corresponding to a region within amino acids 51 and 307 of Syntaxin 5 (Uniprot ID#Q13190)
Formulation:	0.1M Tris, 0.1M Glycine, 20% Glycerol (pH7). 0.01% Thimerosal was added as a preservative.
Concentration:	lot specific
Purification:	Purified by antigen-affinity chromatography.
Conjugation:	Unconjugated
Storage:	Store at -20°C as received.
Stability:	Stable for 12 months from date of receipt.
Predicted Protein Size:	30 kDa
Gene Name:	syntaxin 5
Database Link:	NP_003155 Entrez Gene 6811 Human Q13190
Synonyms:	SED5; STX5A
Note:	Seq homology of immunogen across species: Rhesus Monkey (100%)
Protein Families:	Druggable Genome, Transmembrane
Protein Pathways:	SNARE interactions in vesicular transport

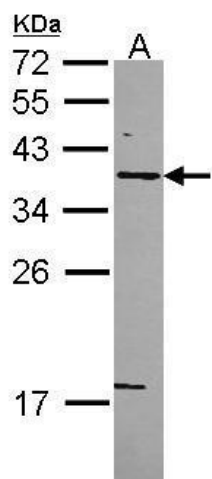


[View online »](#)

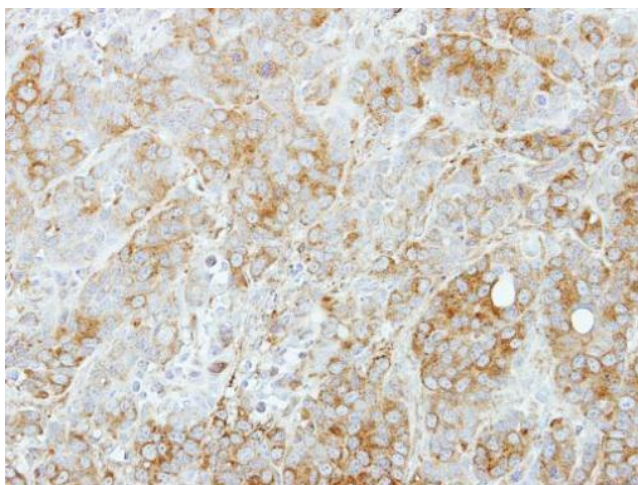
Product images:



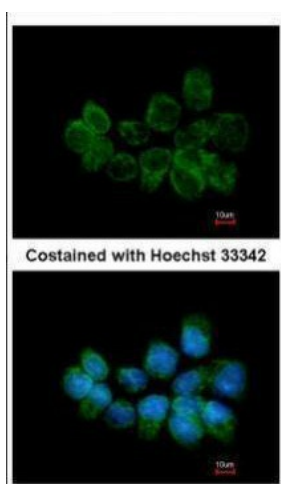
Sample (30 ug of whole cell lysate). A: PC-12. 12% SDS PAGE. TA308160 diluted at 1:5000.



Sample (30 ug of whole cell lysate). A: A431. 12% SDS PAGE. TA308160 diluted at 1:5000.



Immunohistochemical analysis of paraffin-embedded MCF7 xenograft, using Syntaxin 5 (TA308160) antibody at 1:500 dilution.



Immunofluorescence analysis of methanol-fixed A431, using Syntaxin 5 (TA308160) antibody at 1:200 dilution.