

Product datasheet for **TA308156**

PTGES2 Rabbit Polyclonal Antibody

Product data:

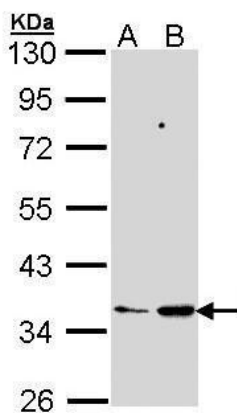
Product Type:	Primary Antibodies
Applications:	WB
Recommended Dilution:	WB:1:500-1:3000
Reactivity:	Human (Predicted: Chimpanzee)
Host:	Rabbit
Isotype:	IgG
Clonality:	Polyclonal
Immunogen:	Recombinant fragment corresponding to a region within amino acids 106 and 343 of PTGES2 (Uniprot ID#Q9H7Z7)
Formulation:	0.1M Tris, 0.1M Glycine, 10% Glycerol (pH7). 0.01% Thimerosal was added as a preservative.
Concentration:	lot specific
Purification:	Purified by antigen-affinity chromatography.
Conjugation:	Unconjugated
Storage:	Store at -20°C as received.
Stability:	Stable for 12 months from date of receipt.
Predicted Protein Size:	42 kDa
Gene Name:	prostaglandin E synthase 2
Database Link:	NP_945176 Entrez Gene 80142 Human Q9H7Z7
Background:	The protein encoded by this gene is a membrane-associated prostaglandin E synthase, which catalyzes the conversion of prostaglandin H2 to prostaglandin E2. This protein also has been shown to activate the transcription regulated by a gamma-interferon-activated transcription element (GATE). Multiple transcript variants encoding different isoforms have been found for this gene. [provided by RefSeq]
Synonyms:	C9orf15; GBF-1; GBF1; mPGES-2; PGES2
Note:	Seq homology of immunogen across species: Chimpanzee (100%)



[View online »](#)

Protein Pathways: Arachidonic acid metabolism, Metabolic pathways

Product images:



Sample (30 ug of whole cell lysate). A: 293T. B: Molt-4. 10% SDS PAGE. TA308156 diluted at 1:1000.