

Product datasheet for **TA308155**

EDC3 Rabbit Polyclonal Antibody

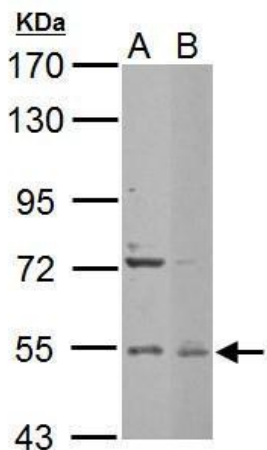
Product data:

Product Type:	Primary Antibodies
Applications:	IHC, WB
Recommended Dilution:	IHC:1:100-1:1000; WB:1:500-1:3000
Reactivity:	Human
Host:	Rabbit
Isotype:	IgG
Clonality:	Polyclonal
Immunogen:	Recombinant fragment corresponding to a region within amino acids 127 and 376 of Edc3 (Uniprot ID#Q96F86)
Formulation:	0.1M Tris, 0.1M Glycine, 20% Glycerol (pH7). 0.01% Thimerosal was added as a preservative.
Concentration:	lot specific
Purification:	Purified by antigen-affinity chromatography.
Conjugation:	Unconjugated
Storage:	Store at -20°C as received.
Stability:	Stable for 12 months from date of receipt.
Predicted Protein Size:	56 kDa
Gene Name:	enhancer of mRNA decapping 3
Database Link:	NP_001135916 Entrez Gene 80153 Human Q96F86
Background:	EDC3 is associated with an mRNA-decapping complex required for removal of the 5-prime cap from mRNA prior to its degradation from the 5-prime end (Fenger-Gron et al., 2005 [PubMed 16364915]). [supplied by OMIM]
Synonyms:	LSM16; YJDC; YJEFN2
Protein Pathways:	RNA degradation

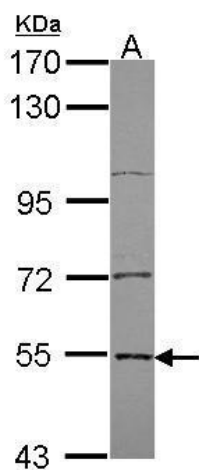


[View online »](#)

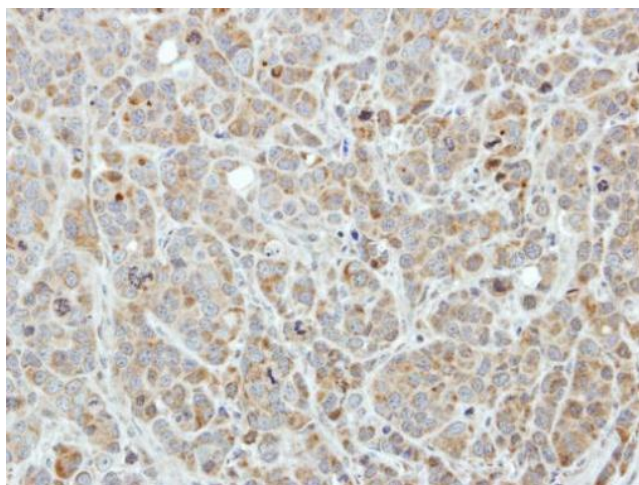
Product images:



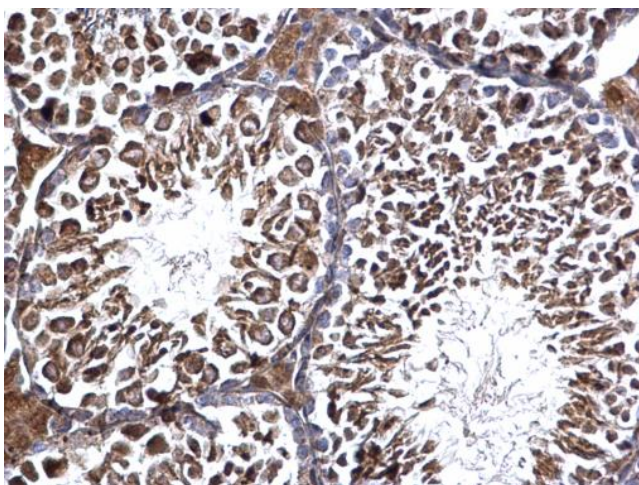
Edc3 antibody [N2C2], Internal detects EDC3 protein by Western blot analysis. A. 30 ug NIH-3T3 whole cell lysate/extract. B. 30 ug C2C12 whole cell lysate/extract. 7.5 % SDS-PAGE. Edc3 antibody [N2C2], Internal (TA308155) dilution: 1:1000



Sample (30 ug of whole cell lysate). A: A431. 7.5% SDS PAGE. TA308155 diluted at 1:3000.



Immunohistochemical analysis of paraffin-embedded MCF7 xenograft, using Edc3 (TA308155) antibody at 1:250 dilution.



Edc3 antibody [N2C2], Internal detects Edc3 protein at cytosol on mouse testis by immunohistochemical analysis. Sample: Paraffin-embedded mouse testis. Edc3 antibody [N2C2], Internal (TA308155) dilution: 1:500.