

## Product datasheet for **TA308154**

### IL36 gamma (IL36G) Rabbit Polyclonal Antibody

#### Product data:

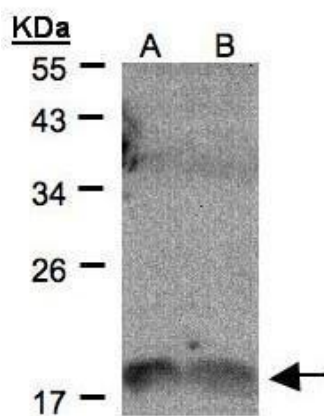
Product Type:	Primary Antibodies
Applications:	IHC, WB
Recommended Dilution:	IHC:1:100-1:1000; WB:1:500-1:3000
Reactivity:	Human
Host:	Rabbit
Isotype:	IgG
Clonality:	Polyclonal
Immunogen:	Synthetic peptide corresponding to a region within amino acids 105 and 169 of IL1F9 (Uniprot ID#Q9NZH8)
Formulation:	0.1M Tris, 0.1M Glycine, 10% Glycerol (pH7). 0.01% Thimerosal was added as a preservative.
Purification:	Purified by antigen-affinity chromatography.
Conjugation:	Unconjugated
Storage:	Store at -20°C as received.
Stability:	Stable for 12 months from date of receipt.
Predicted Protein Size:	19 kDa
Gene Name:	interleukin 36, gamma
Database Link:	<a href="#">NP_062564</a> <a href="#">Entrez Gene 56300 Human Q9NZH8</a>
Background:	The protein encoded by this gene is a member of the interleukin 1 cytokine family. The activity of this cytokine is mediated by interleukin 1 receptor-like 2 (IL1RL2/IL1R-rp2), and is specifically inhibited by interleukin 1 family, member 5 (IL1F5/IL-1 delta). Interferon-gamma, tumor necrosis factor-alpha and interleukin 1, beta (IL1B) are reported to stimulate the expression of this cytokine in keratinocytes. The expression of this cytokine in keratinocytes can also be induced by a contact hypersensitivity reaction or herpes simplex virus infection. This gene and eight other interleukin 1 family genes form a cytokine gene cluster on chromosome 2. [provided by RefSeq]
Synonyms:	IL-1F9; IL-1H1; IL-1RP2; IL1E; IL1F9; IL1H1; IL1RP2



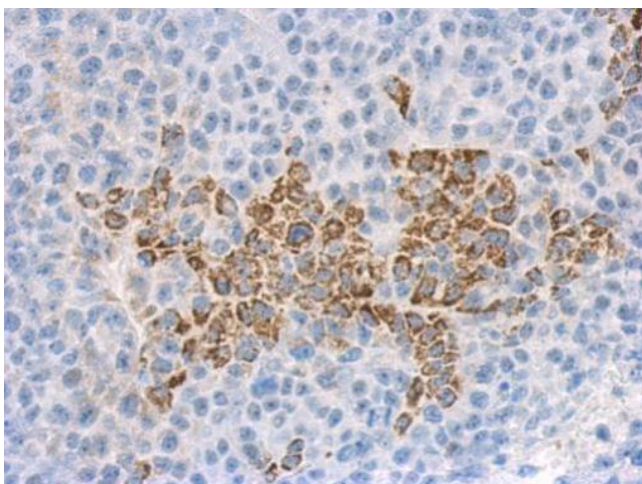
[View online »](#)

Protein Families: Druggable Genome, Secreted Protein

### Product images:



Sample (30 ug of whole cell lysate). A:H1299.  
B:HeLa S3. 12% SDS PAGE. TA308154 diluted at 1:500



Immunohistochemical analysis of paraffin-embedded HeLa xenograft, using IL1F9 antibody (TA308154) antibody at 1:500 dilution.