

## Product datasheet for **TA308153**

### MDH2 Rabbit Polyclonal Antibody

#### Product data:

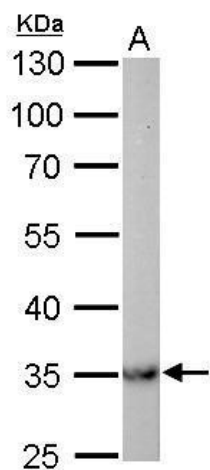
|                         |   |
|-------------------------|---|
| Product Type:           | Primary Antibodies  |
| Applications:           | IHC, WB   |
| Recommended Dilution:   | IHC:1:100-1:1000; WB:1:1000-1:10000   |
| Reactivity:             | Human, Mouse  |
| Host:                   | Rabbit  |
| Isotype:                | IgG   |
| Clonality:              | Polyclonal  |
| Immunogen:              | Recombinant fragment corresponding to a region within amino acids 40 and 319 of MDH2 (Uniprot ID#P40926)  |
| Formulation:            | 1XPBS, 1% BSA, 20% Glycerol (pH7). 0.025% ProClin 300 was added as a preservative.  |
| Concentration:          | lot specific  |
| Purification:           | Purified by antigen-affinity chromatography.  |
| Conjugation:            | Unconjugated  |
| Storage:                | Store at -20°C as received.   |
| Stability:              | Stable for 12 months from date of receipt.  |
| Predicted Protein Size: | 36 kDa  |
| Gene Name:              | malate dehydrogenase 2  |
| Database Link:          | <a href="#">NP_005909</a><br><a href="#">Entrez Gene 17448 Mouse</a> <a href="#">Entrez Gene 4191 Human</a><br><a href="#">P40926</a>   |
| Background:             | Malate dehydrogenase catalyzes the reversible oxidation of malate to oxaloacetate, utilizing the NAD/NADH cofactor system in the citric acid cycle. The protein encoded by this gene is localized to the mitochondria and may play pivotal roles in the malate-aspartate shuttle that operates in the metabolic coordination between cytosol and mitochondria. [provided by RefSeq] |
| Synonyms:               | M-MDH; MDH; MGC:3559; MOR1  |
| Protein Families:       | Druggable Genome  |



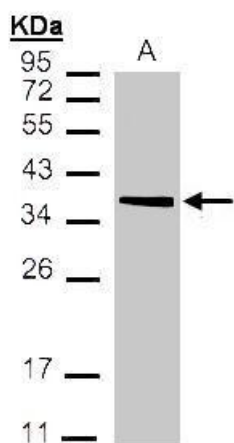
[View online »](#)

**Protein Pathways:** Citrate cycle (TCA cycle), Glyoxylate and dicarboxylate metabolism, Metabolic pathways, Pyruvate metabolism

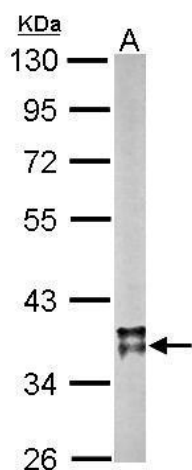
**Product images:**



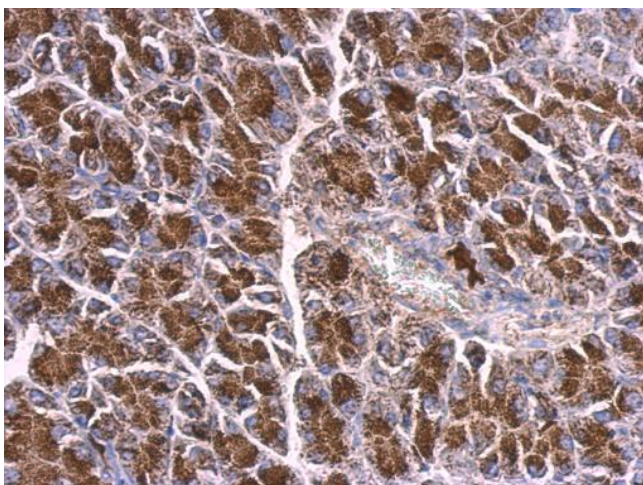
MDH2 antibody detects MDH2 protein by Western blot analysis. A. 50 ug rat lung lysate/extract. 10 % SDS-PAGE. MDH2 antibody (TA308153) dilution: 1:5000



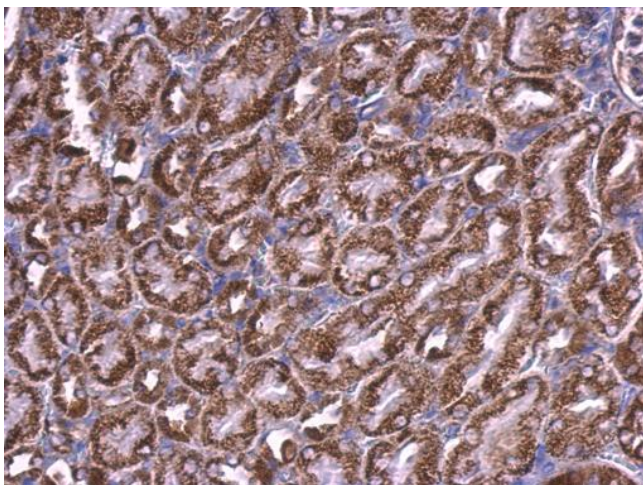
Sample (30 ug of whole cell lysate). A:293T. 12% SDS PAGE. TA308153 diluted at 1:1000



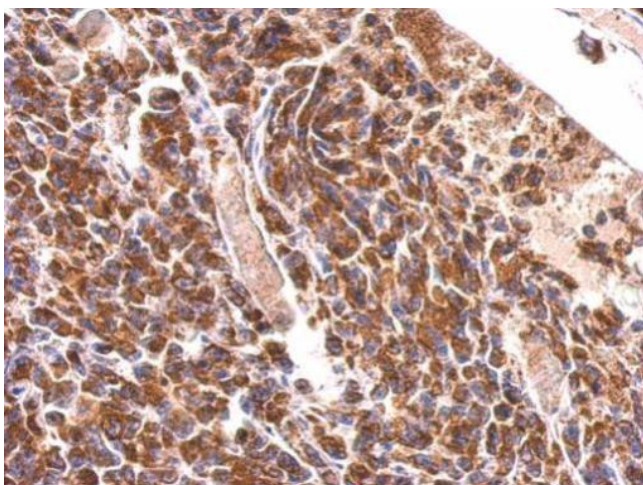
Sample (20 ug of whole cell lysate). A: mouse brain. 10% SDS PAGE. TA308153 diluted at 1:10000.



MDH2 antibody detects MDH2 protein at mitochondrion on mouse pancreas by immunohistochemical analysis. Sample: Paraffin-embedded mouse pancreas. MDH2 antibody (TA308153) dilution: 1:500.



MDH2 antibody detects MDH2 protein at mitochondrion on mouse kidney by immunohistochemical analysis. Sample: Paraffin-embedded mouse kidney. MDH2 antibody (TA308153) dilution: 1:500.



MDH2 antibody detects MDH2 protein at cytosol on H1299 xenograft by immunohistochemical analysis. Sample: Paraffin-embedded H1299 xenograft. MDH2 antibody (TA308153) dilution: 1:500.