

## Product datasheet for **TA308152**

### PIGR Rabbit Polyclonal Antibody

#### Product data:

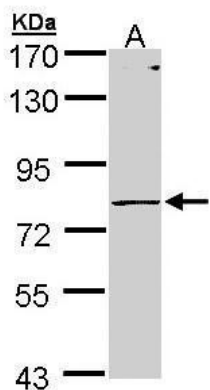
Product Type:	Primary Antibodies
Applications:	IF, IHC, WB
Recommended Dilution:	ICC/IF:1:100-1:1000; IHC:1:100-1:1000; WB:1:500-1:3000
Reactivity:	Human
Host:	Rabbit
Isotype:	IgG
Clonality:	Polyclonal
Immunogen:	Recombinant fragment corresponding to a region within amino acids 180 and 459 of PIGR (Uniprot ID#P01833)
Formulation:	1XPBS, 20% Glycerol (pH7). 0.025% ProClin 300 was added as a preservative.
Concentration:	lot specific
Purification:	Purified by antigen-affinity chromatography.
Conjugation:	Unconjugated
Storage:	Store at -20°C as received.
Stability:	Stable for 12 months from date of receipt.
Predicted Protein Size:	83 kDa
Gene Name:	polymeric immunoglobulin receptor
Database Link:	<a href="#">NP_002635</a> <a href="#">Entrez Gene 5284 Human P01833</a>
Background:	The poly-Ig receptor is expressed on several glandular epithelia including those of liver and breast. It mediates transcellular transport of polymeric immunoglobulin molecules. It is a member of the immunoglobulin superfamily (Hood et al., 1985 [PubMed 3917857]). The receptor has 5 units with homology to the variable (V) units of immunoglobulins and a transmembrane region, which also has some homology to certain immunoglobulin variable regions. [supplied by OMIM]
Synonyms:	FLJ22667; MGC125361; MGC125362



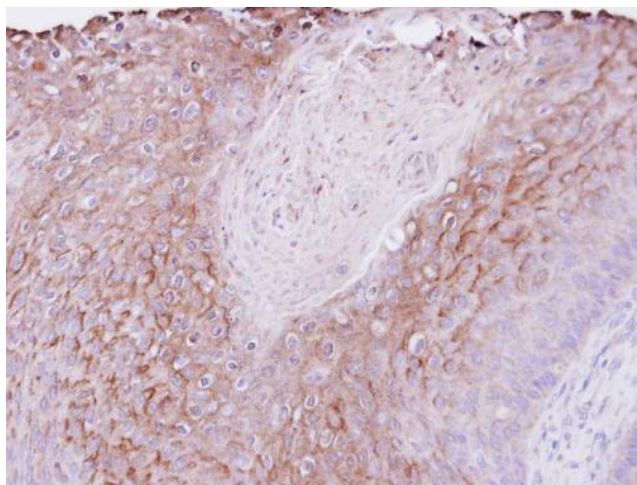
[View online »](#)

Protein Families: Druggable Genome, Secreted Protein, Transmembrane

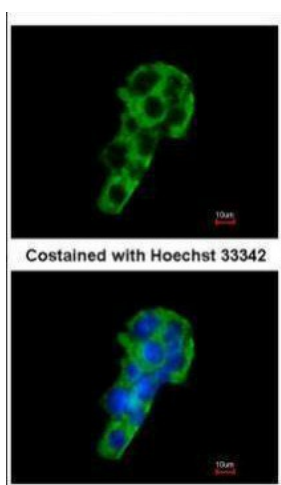
### Product images:



Sample (30 ug of whole cell lysate). A: Molt-4.  
7.5% SDS PAGE. TA308152 diluted at 1:1000



Immunohistochemical analysis of paraffin-  
embedded Cal27 xenograft, using PIGR  
(TA308152) antibody at 1:500 dilution.



Immunofluorescence analysis of methanol-fixed HepG2, using PIGR (TA308152) antibody at 1:200 dilution.